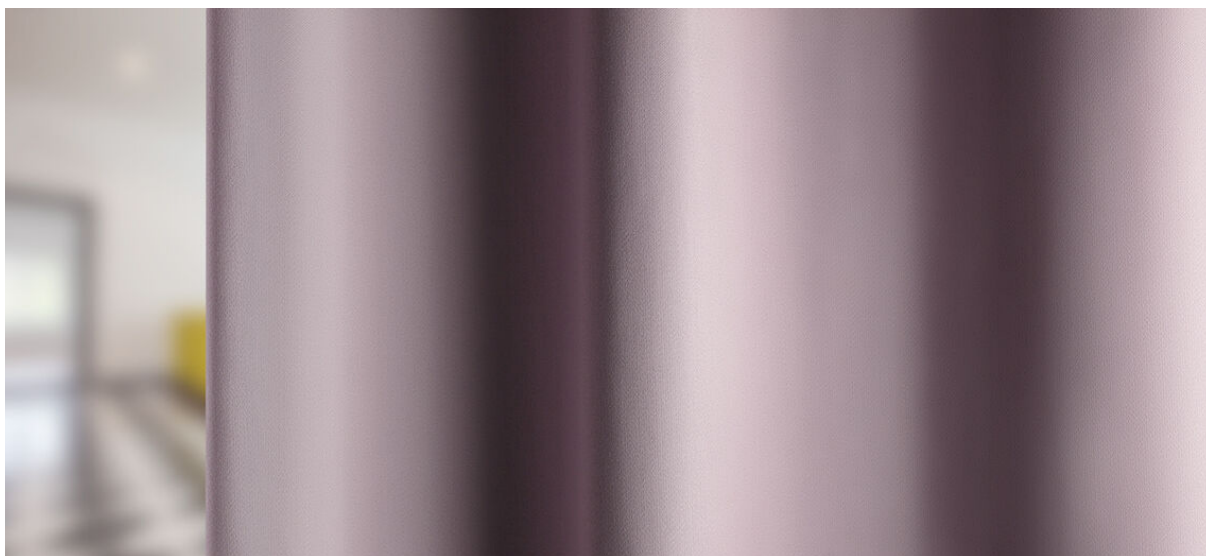


mioko

8057.01 - 8057.33



Kollektion

curtain 01

Beschreibung

ebenes Satin

Zusammensetzung

100% schwer entflammbares Polyester

Breite

± 140 cm, ± 56 inches

Gewicht

± 413 gr/m¹, ± 12 oz/yd¹ fabrics

Visueller & Thermischer Komfort

EN 410/EN 14501

Brandschutzklasse

EN 13773, class 1

BS 5867-2, type C

NF P 92/503-507, M1

DIN 4102, B1

UNI VF 8456-8457, classe 1

IMO 2010 FTP part 7

NFPA 701

CAN ULC S109

Reibechtheit

ISO 105-X12

wet 5 / dry 5 (Skala 1-5)

AATCC 8

nass 5 / trocken 5 (Skala 1-5)

Lichtechtheit

ISO 105-B02

6-7 (Skala 1-8)

AATCC 16.3: 60 hours

5 (Skala 1-5)

Nahtschiebewiderstand

ASTM D434

warp 45.5 lbs / weft 40.5 lbs

Pflege



Schrumpfwerte: Kette: -1% / Schuss: -0,4%

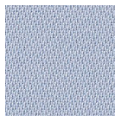


Schrumpfwerte: Kette: -1,7% / Schuss: -0,6%



mioko

8057.01 - 8057.33



8057.01



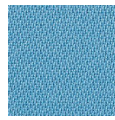
8057.02



8057.03



8057.04



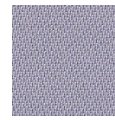
8057.05



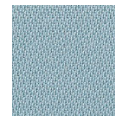
8057.06



8057.07



8057.08



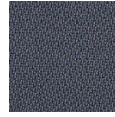
8057.09



8057.10



8057.11



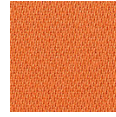
8057.12



8057.13



8057.14



8057.15



8057.16



8057.17



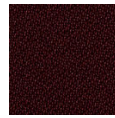
8057.18



8057.19



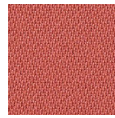
8057.20



8057.21



8057.22



8057.23



8057.24



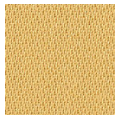
8057.25



8057.26



8057.27



8057.28



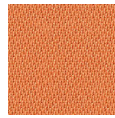
8057.29



8057.30



8057.31



8057.32



8057.33