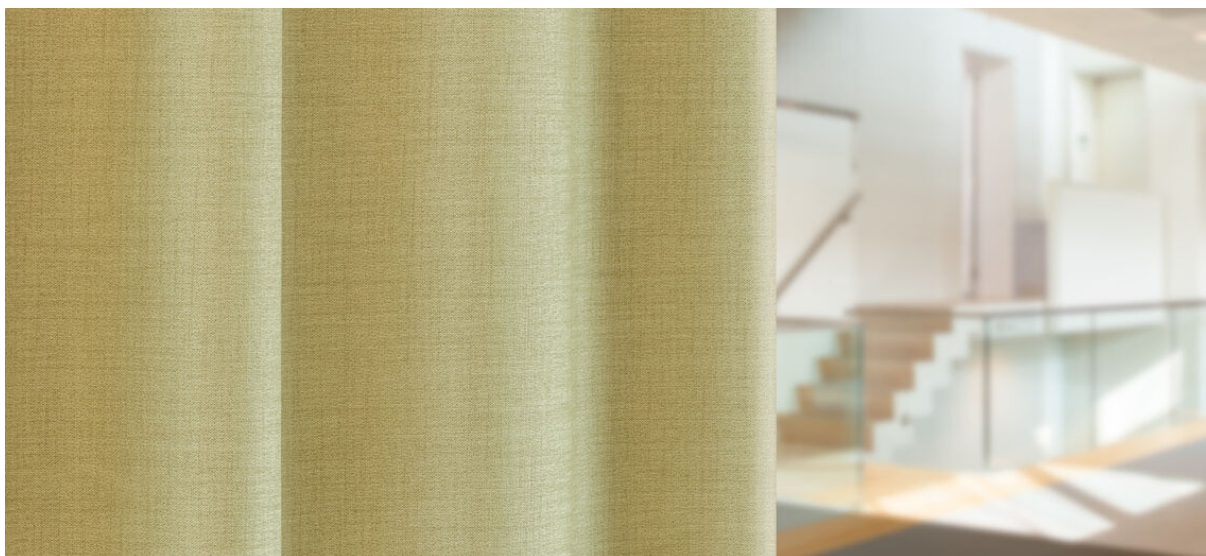


rani

8067.01 - 8067.22



Kollektion

curtain 02

Beschreibung

Vorhangstoff in Leinenoptik, Dim-Out

Zusammensetzung

100% schwer entflammables Polyester

Breite

± 294 cm, ± 116 inches

Gewicht

± 861 gr/m¹, ± 28 oz/yd¹ fabrics

Visueller & Thermischer Komfort

EN 410/EN 14501

AATCC 148

Brandschutzklasse

EN 13773, class 1

BS 5867-2, type C

NF P 92/503-507, M1

DIN 4102, B1

UNI VF 8456-8457, classe 1

NFPA 701

CAN/ULC S109

IMO 2010 FTP part 7

Reibechtheit

ISO 105-X12

nass 4-5 / trocken 4-5 (skala 1-5)

AATCC 8

nass 5 / trocken 5 (skala 1-5)

Lichtechtheit

ISO 105-B02

5 (scale 1 - 8)

AATCC 16.3: 60 hours

2.5 (skala 1-5)

Nahtschibewiderstand

ASTM D434

warp 53.5 lbs / weft 48 lbs

Pflege



Schrumpfwerte: Kette -0.8% / Schuss -0.4%



Schrumpfwerte: Kette -1.6% / Schuss -0.7%

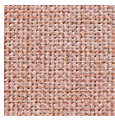


**CONFIDENCE
IN TEXTILES**
Tested for harmful substances
according to Oeko-Tex® Standard 100

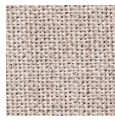


rani

8067.01 - 8067.22



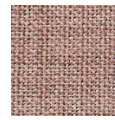
8067.01



8067.02



8067.03



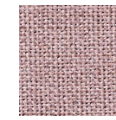
8067.04



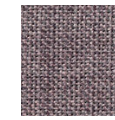
8067.05



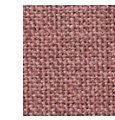
8067.06



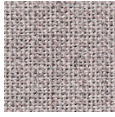
8067.07



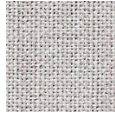
8067.08



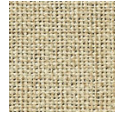
8067.09



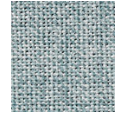
8067.10



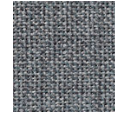
8067.11



8067.12



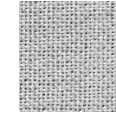
8067.13



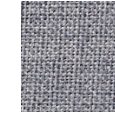
8067.14



8067.15



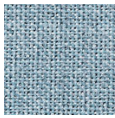
8067.16



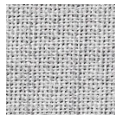
8067.17



8067.18



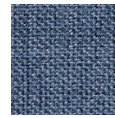
8067.19



8067.20



8067.21



8067.22