

# hestan

7035.01 - 7035.30



## Kollektion

**upholstery  
textile**

## Beschreibung

**ein grobes semi-unifarbenes Gewebe**

## Zusammensetzung

**> 37% recycled polyester FR / < 63%  
polyester FR**

## Breite

**± 140 cm, ± 55 inches**

## Gewicht

**± 570 gr/m<sup>1</sup>, ± 18 oz/yd<sup>1</sup> fabrics**

## Brandschutzklasse

**EN 1021/ 1- 2**

**BS 5852, crib 5**

**NF P 92 / 503 - 507, M1**

**DIN 4102, B1**

**IMO 2010 FTP part 8**

**UNI 9175, classe 1 IM**

**Cal TB 117**

## Abrieb

**ISO 12947-2**

60.000 rubs martindale

**ASTM D4157**

100.000 double rubs wyzenbeek

## Pillingbildung

**ISO 12945-2**

4-5 (skala 1-5)

**ASTM D3511**

4-5 (skala 1-5)

## Reibechtheit

**ISO 105-X12**

nass 4-5 / trocken 4-5 (skala 1-5)

**AATCC 8**

nass 5 / trocken 5 (skala 1-5)

## Lichtechtheit

**ISO 105-B02**

6 (skala 1-8)

**AATCC 16.3: 40 hours**

5 (skala 1-5)

## Nahtschibewiderstand

**ISO 13936 - 2**

Kette 2.7 mm / Schuss 2.7 mm

**ASTM D4034**

Kette 83 lbf / Schuss 91 lbf

## Reißfestigkeit

**ASTM D5034**

warp 353 lbs / weft 377 lbs

## Pflege



**Schrumpfwerte: Kette -1.5% / Schuss -1.5%**



**Schrumpfwerte: Kette -2.9% / Schuss -3.0%**



STANDARD  
100

S07-0023  
Hohenstein HTTI

# hestan

7035.01 - 7035.30

---



7035.01



7035.02



7035.03



7035.04



7035.05



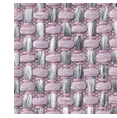
7035.06



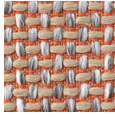
7035.07



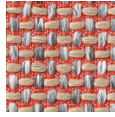
7035.08



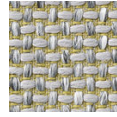
7035.09



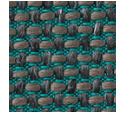
7035.10



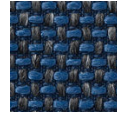
7035.11



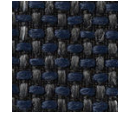
7035.12



7035.13



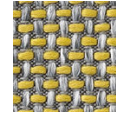
7035.14



7035.15



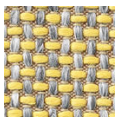
7035.16



7035.17



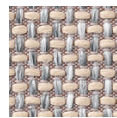
7035.18



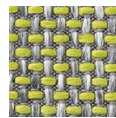
7035.19



7035.20



7035.21



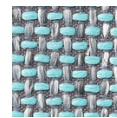
7035.22



7035.23



7035.24



7035.25



7035.26



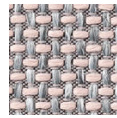
7035.27



7035.28



7035.29



7035.30