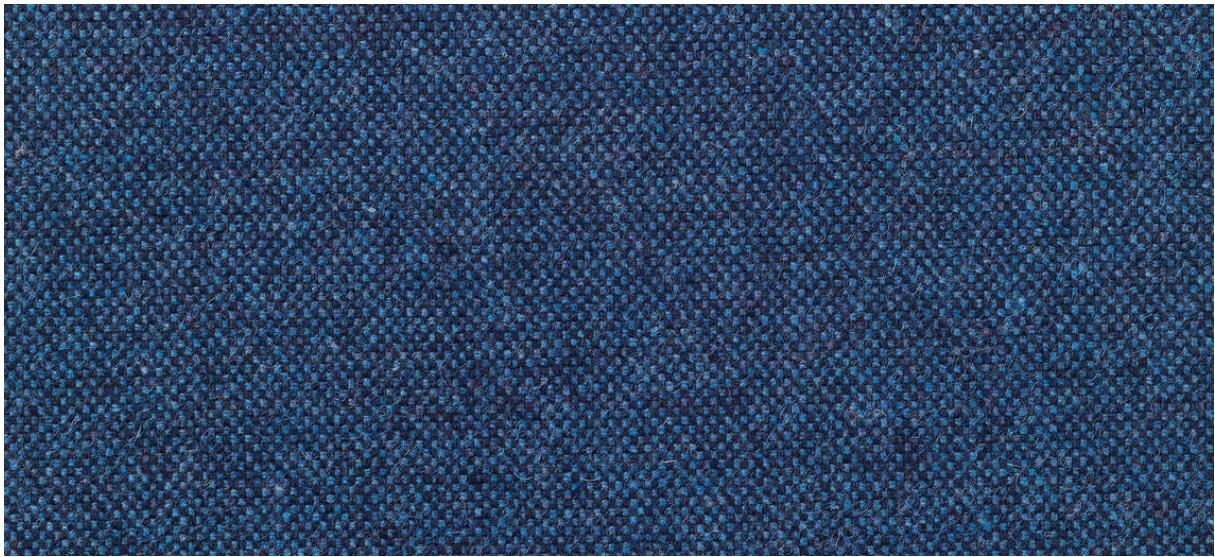


wolin

7050.01 - 7050.47



Kollektion

upholstery

Beschreibung

Gefilzte, feinmaschige Wollqualität in vielfältigen Farbmischungen und Uni-Tönen

Zusammensetzung

75% post-consumer recycled Wolle / 20% Polyester / 5% polyamid

Breite

± 150 cm, ± 59 inches

Gewicht

± 638 gr/m¹, ± 21 oz/yd¹ fabrics

Brandschutzklasse

EN 1021/1-2

BS 5852, crib 5

NF P 92/503-507, M2

DIN 4102, B2

IMO 2010 FTP part 8

UNI 9175, classe 1 IM

Cal TB 117

NFPA 260, class 1

Abrieb

ISO 12947-2

>100.000 rubs martindale

ASTM D4157

100.000 double rubs wyzenbeek

Pillingbildung

ISO 12945-2

3-4 (skala 1-5)

ASTM D3511

4 (skala 1-5)

Reibechtheit

ISO 105-X12

nass 4-5 / trocken 4-5 (skala 1-5)

AATCC 8

nass 4-5 / trocken 5 (skala 1-5)

Lichtechtheit

ISO 105-B02

6 (skala 1-8)

AATCC 16.3: 40 hours

4 (skala 1-5)

Nahtschiebewiderstand

ISO 13936 - 2

Kette 3 mm / Schuss 3.4 mm

ASTM D4034

Kette 82 lbf / Schuss 81 lbf

Reißfestigkeit

ASTM D5034

warp 123 lbs / weft 109 lbs

Pflege



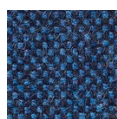


STANDARD
100

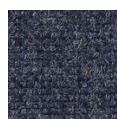
S19-3058
Hohenstein HTTI

wolin

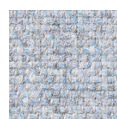
7050.01 - 7050.47



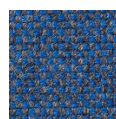
7050.01



7050.02



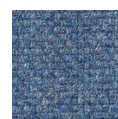
7050.03



7050.04



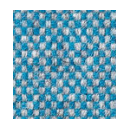
7050.05



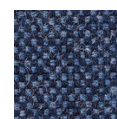
7050.06



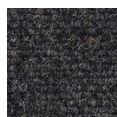
7050.07



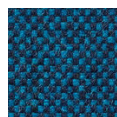
7050.08



7050.09



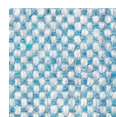
7050.10



7050.11



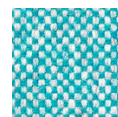
7050.12



7050.13



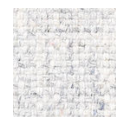
7050.14



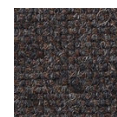
7050.15



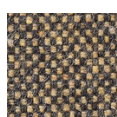
7050.16



7050.17



7050.18



7050.19



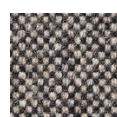
7050.20



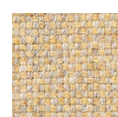
7050.21



7050.22



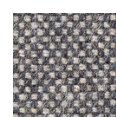
7050.23



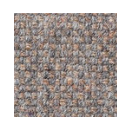
7050.24



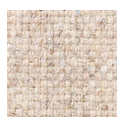
7050.25



7050.26



7050.27



7050.28



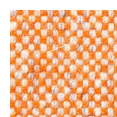
7050.29



7050.30



7050.31



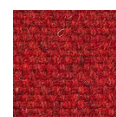
7050.32



7050.33



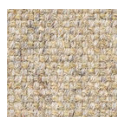
7050.34



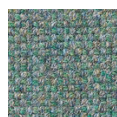
7050.35



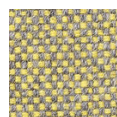
7050.36



7050.37



7050.38



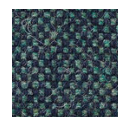
7050.39



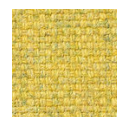
7050.40



7050.41



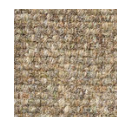
7050.42



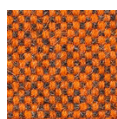
7050.43



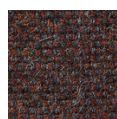
7050.44



7050.45



7050.46



7050.47