

burton

7056.01 - 7056.23



Kollektion

upholstery 01

Beschreibung

zweifarbige gewebtes Uni mit Melange-Effekt

Zusammensetzung

100% schwer entflammables Polyester

Breite

± 140 cm, ± 55 inches

Gewicht

± 763 gr/m¹, ± 25 oz/yd¹ fabrics

Brandschutzklasse

EN 1021/ 1-2

BS 5852, crib 5

NF P 92 / 503 - 507, M1

DIN 4102, B1

UNI 9175, classe 1

Cal TB 117

NFPA 260, class 1

IMO 2010 FTP part 8

Abrieb

ISO 12947-2

80.000 rubs martindale

ASTM D4157

100.000 double rubs wyzenbeek

Pillingbildung

ISO 12945-2

4 (skala 1-5)

ASTM D3511

4 (skala 1-5)

Reibechtheit

ISO 105-X12

nass 4 - 5 / trocken 4 - 5 (skala 1-5)

AATCC 8

nass 5 / trocken 5 (skala 1-5)

Lichtechtheit

ISO 105-B02

6 - 7 (skala 1-8)

AATCC 16.3: 40 hours

4.5 (skala 1-5)

Nahtschibewiderstand

ISO 13936 - 2

Kette 3 mm / Schuss 2.7 mm

ASTM D4034

Kette 101 lbs / Schuss 107 lbs

Pflege



Einlauf: Kette -0.7% / Schuss -0.6%



Einlauf: Kette -1.8% / Schuss -2.2%

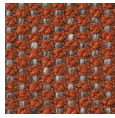


burton

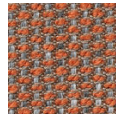
7056.01 - 7056.23



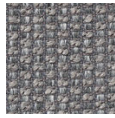
7056.01



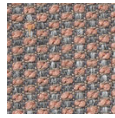
7056.02



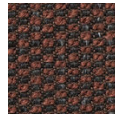
7056.03



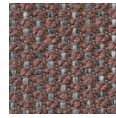
7056.04



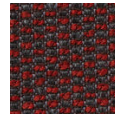
7056.05



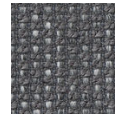
7056.06



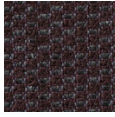
7056.07



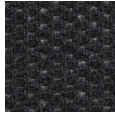
7056.08



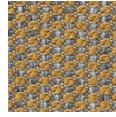
7056.09



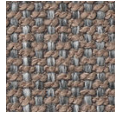
7056.10



7056.11



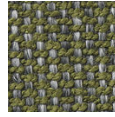
7056.12



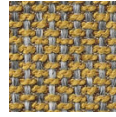
7056.13



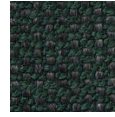
7056.14



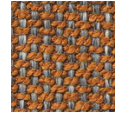
7056.15



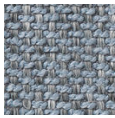
7056.16



7056.17



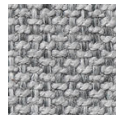
7056.18



7056.19



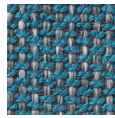
7056.20



7056.21



7056.22



7056.23