

# rolla

7065.01 - 7065.20



Kollektion  
**upholstery 01**

Beschreibung  
**dreidimensionaler, cooler, grafischer  
Möbelstoff**

Zusammensetzung  
**100% schwer entflammables Polyester**

Breite  
**± 140 cm, ± 55 inches**

Gewicht  
**± 775 gr/m<sup>1</sup>, ± 25 oz/yd<sup>1</sup> fabrics**

Brandschutzklasse  
**EN 1021/ 1-2**  
**BS 5852, crib 5**  
**NF P 92 / 503 - 507, M1**  
**DIN 4102, B1**  
**UNI 9175, classe 1.IM**  
**Cal TB 117**  
**NFPA 260, class 1**  
**IMO 2010 FTP part 8**

Abrieb  
**ISO 12947-2**  
50.000 rubs martindale  
**ASTM D4157**  
100.000 double rubs wyzenbeek

Pillingbildung  
**ISO 12945-2**  
4 (skala 1-5)  
**ASTM D3511**  
3 (skala 1-5)

Reibechtheit  
**ISO 105-X12**  
nass 4-5 / trocken 4-5 (skala 1-5)  
**AATCC 8**  
nass 5 / trocken 4.5 (skala 1-5)

Lichtechtheit  
**ISO 105-B02**  
6 (skala 1-8)  
**AATCC 16.3: 40 hours**  
4 (skala 1-5)

Nahtschiebewiderstand  
**ISO 13936 - 2**  
Kette 2.3 mm / Schuss 2 mm  
**ASTM D4034**  
Kette 102 lbs / Schuss 83 lbs

Reißfestigkeit  
**ISO 13937**  
warp 1120 N / weft 2500 N  
**ASTM D5034**  
warp 239 lbs / weft 560 lbs

Pflege  

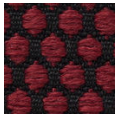

**Einlauf: Kette -2.8% / Schuss -2.6%**



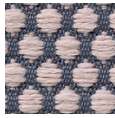
# rolla

7065.01 - 7065.20

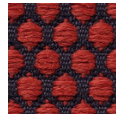
---



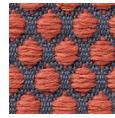
7065.01



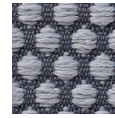
7065.02



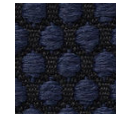
7065.03



7065.04



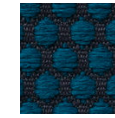
7065.05



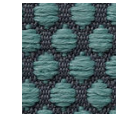
7065.06



7065.07



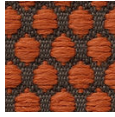
7065.08



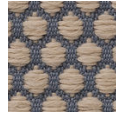
7065.09



7065.10



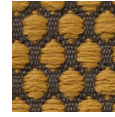
7065.11



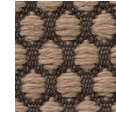
7065.12



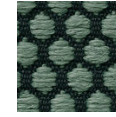
7065.13



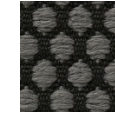
7065.14



7065.16



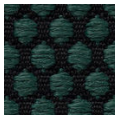
7065.17



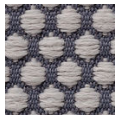
7065.18



7065.19



7065.20



7065.15