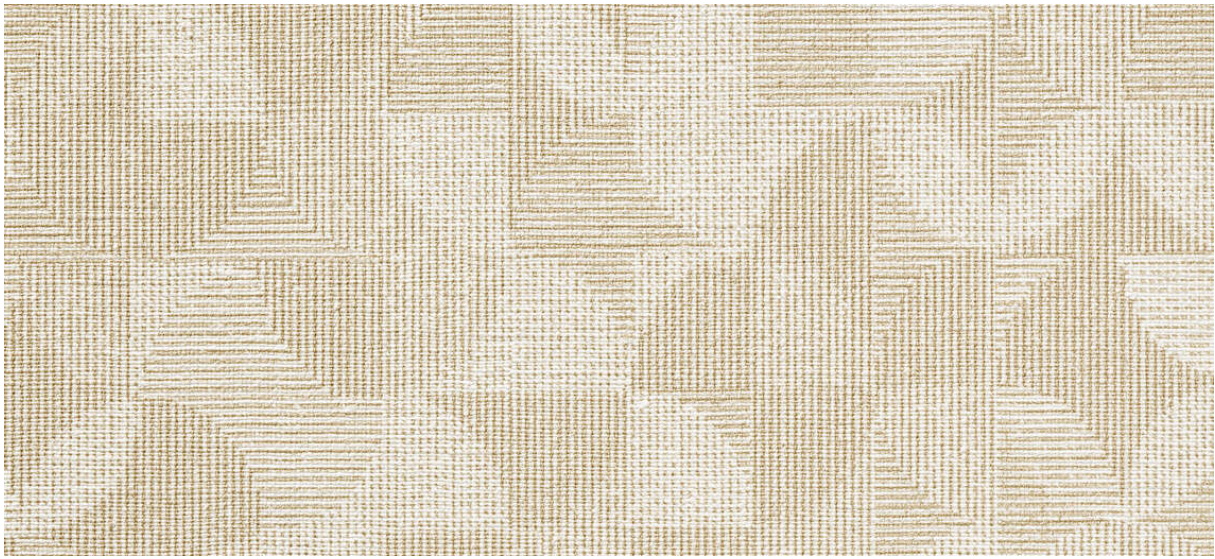


# arches

7066.01 - 7066.17



Kollektion

**upholstery**

**03**

**vinyl**

Beschreibung

**Dynamische textile Gewebestruktur**

Zusammensetzung

**Geschäumtes Vinyl,  
Baumwoll-/Polyesterträger**

Breite

**± 137-140 cm, ± 54-55 inches**

Gewicht

**Backing: ± 110 gr/m<sup>2</sup>, ± 5 oz/yd<sup>1</sup>**

**Coating: ± 690 gr/m<sup>2</sup>, ± 31 oz/yd<sup>1</sup>**

Dicke

**1.1 mm, 0.04 inches**

Brandschutzklasse

**EN 1021/1-2**

**BS 5852, crib 5**

**NF P 92/503 - 507, M2**

**NF D60-013 (AM 18)**

**DIN 4102, B2**

**UNI 9175, classe 1 IM**

**Cal TB 117**

**NFPA 260, class 1**

**IMO 2010 FTP part 8**

Abrieb

**ISO 12947-2**

> 300.000 rubs martindale

**ASTM D4157**

100.000 double rubs wyzenbeek

Reibechtheit

**ISO 105-X12**

wet 5 / dry 5 (scale 1-5)

**AATCC 8**

wet 5 / dry 5 (scale 1-5)

Lichtechtheit

**ISO 105-B02**

7 (scale 1-8)

**ASTM D4329: 150 hours**

4 (scale 1-5)

Beständig gegen Blut, Urin, Schweiß und Hautfett

**EN 12720**

5 (scale 1-5)

Reißfestigkeit

**ISO 1421**

length 470 N / width 313 N

**ASTM D2261**

length 7 lbs / width 9 lbs

Knickbeständigkeit

**ISO 7854**

400.000 cycles

Beschichtungshaftung

**ASTM D751**

length 8 lbf / width 5 lbf

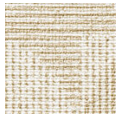


**vinyl**   
COMMITTED TO  
SUSTAINABLE DEVELOPMENT

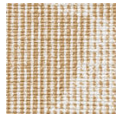
# arches

7066.01 - 7066.17

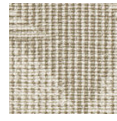
---



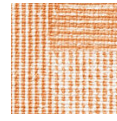
7066.01



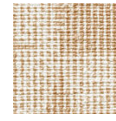
7066.02



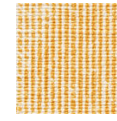
7066.03



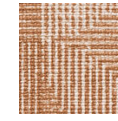
7066.04



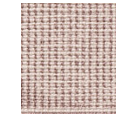
7066.05



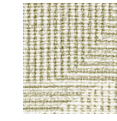
7066.06



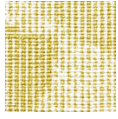
7066.07



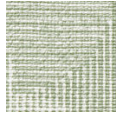
7066.08



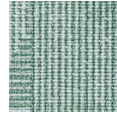
7066.09



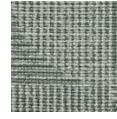
7066.10



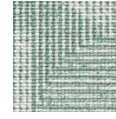
7066.11



7066.12



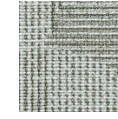
7066.13



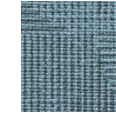
7066.14



7066.15



7066.16



7066.17