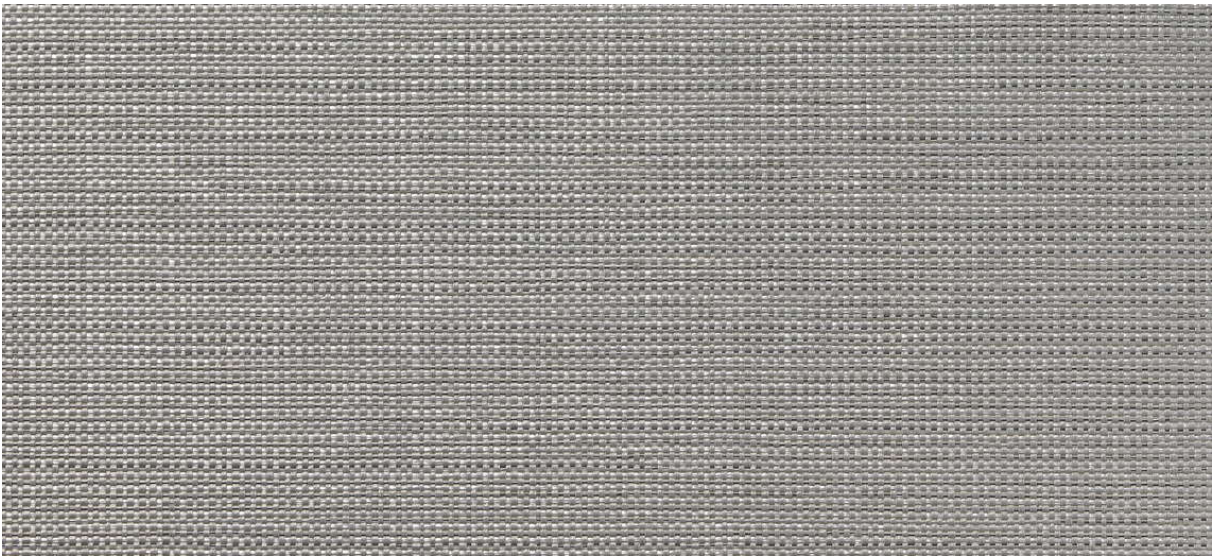


dash

2533.01 - 2533.18



Kollektion

**wallcovering
textile
xorel**



Beschreibung

Semi-uni vielfarbiges Flachgewebe



Zusammensetzung

**100% xorel (Polyethylen) (65% biobased PE,
35% PE)**



Breite

± 132 cm, ± 52 inches

Gewicht

± 360 gr/m², ± 15 oz/yd¹

Brandschutzklasse

**EN 13501, B s1 d2
ASTM E84, A**

Wasserdampfdurchlässigkeit

ISO 15106-3 / EN ISO 12572

Sd Wert <0,5 m

Weitere Informationen

cradle to cradle gold certified

**Xorel is a registered trademark and license
to distribute is granted by permission of
Carnegie Fabrics Inc. US**

dash

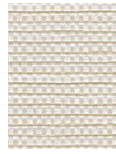
2533.01 - 2533.18



2533.02



2533.03



2533.09



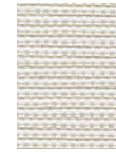
2533.06



2533.14



2533.12



2533.08



2533.05