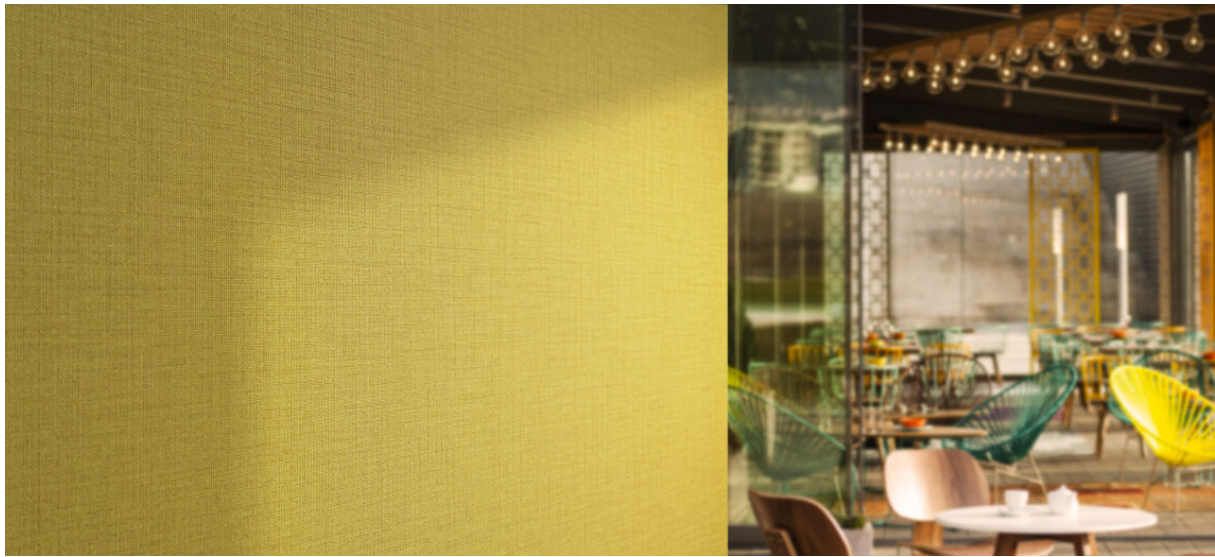


silā

1109.01 - 1109.25



Kollektion
**wallcovering
vinyl**

Beschreibung
**Bi-Color-Feinleinenstruktur mit dezentem
Glanz**

Zusammensetzung
**Vinyl-Deckschicht bedruckt mit Farben auf
Wasserbasis, Baumwollträger**

Breite
± 130 cm, ± 51 inches

Gewicht
± 350 gr/m², ± 15 oz/yd¹

Schallabsorption

ISO 354

alphaw 0.10

ASTM C423

nrc 0.10

Brandschutzklasse

EN 13501, B s1 d0

ASTM E84, A

IMO 2010 FTP part 2-5

Lichtechtheit

ISO 105-B02

7 (scale 1-8)

CCC-W-408D

type II

Wasserdampfdurchlässigkeit

ISO 15106-3 / EN ISO 12572

Sd Wert ± 9 m



vinyl COMMITTED TO
SUSTAINABLE DEVELOPMENT

CE EN 15102

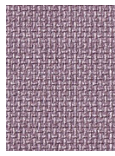


silā

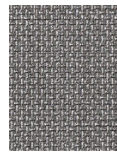
1109.01 - 1109.25



1109.01



1109.02



1109.03



1109.04



1109.05



1109.06



1109.07



1109.08



1109.09



1109.10



1109.11



1109.12



1109.13



1109.14



1109.15



1109.16



1109.17



1109.18



1109.19



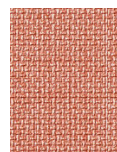
1109.20



1109.21



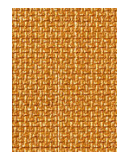
1109.22



1109.23



1109.24



1109.25