

sindo

8027.01 - 8027.37



binder

curtain 01

description

lightly blended unpatterned curtain fabric in 100% flame retardant polyester

composition

100% flame retardant polyester

width

± 140 cm, ± 55 inches

weight

± 297 gr/m¹, ± 10 oz/yd¹ fabrics

visual & thermal comfort

EN 410/EN 14501

flame retardancy

EN 13773, class 1

BS 5867-2, type C

NF P 92/503-507, M1

DIN 4102, B1

UNI VF 8456-8457, classe 1

IMO 2010 FTP part 7

NFPA 701

CAN ULC S109

colorfastness to crocking

ISO 105-X12

wet 4-5 / dry 4-5 (scale 1-5)

AATCC 8

wet 5 / dry 5 (scale 1-5)

colorfastness to light

ISO 105-B02

light 6 / dark 6-7 (scale 1-8)

AATCC 16.3: 60 hrs

4-5 (scale 1-5)

seam slippage

ISO 13936-2

warp 4 mm / weft 4 mm

ASTM D434

warp 44 lbs / weft 52 lbs

additional information

especially developed and produced for the healthcare sector

care

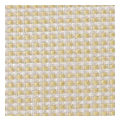


shrinkage: warp -1.8% / weft -1.2%

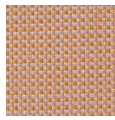


sindo

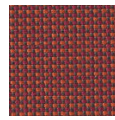
8027.01 - 8027.37



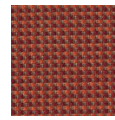
8027.03



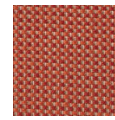
8027.02



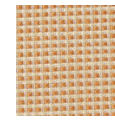
8027.01



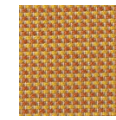
8027.05



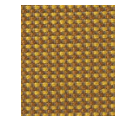
8027.06



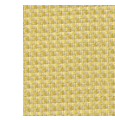
8027.07



8027.11



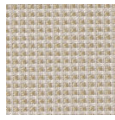
8027.19



8027.12



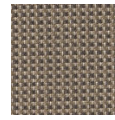
8027.04



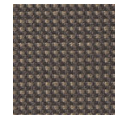
8027.17



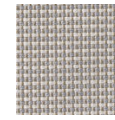
8027.09



8027.13



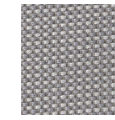
8027.10



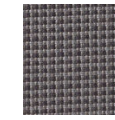
8027.24



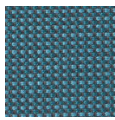
8027.21



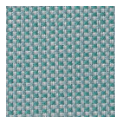
8027.23



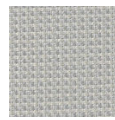
8027.25



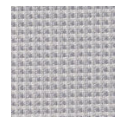
8027.36



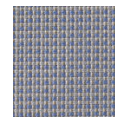
8027.33



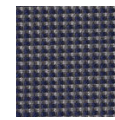
8027.28



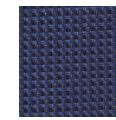
8027.22



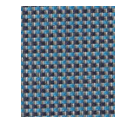
8027.26



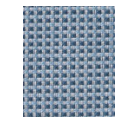
8027.30



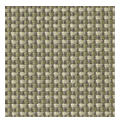
8027.27



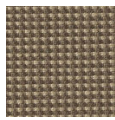
8027.34



8027.37



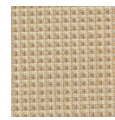
8027.35



8027.14



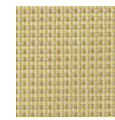
8027.15



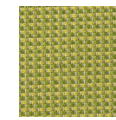
8027.18



8027.08



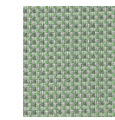
8027.16



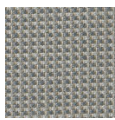
8027.20



8027.31



8027.29



8027.32