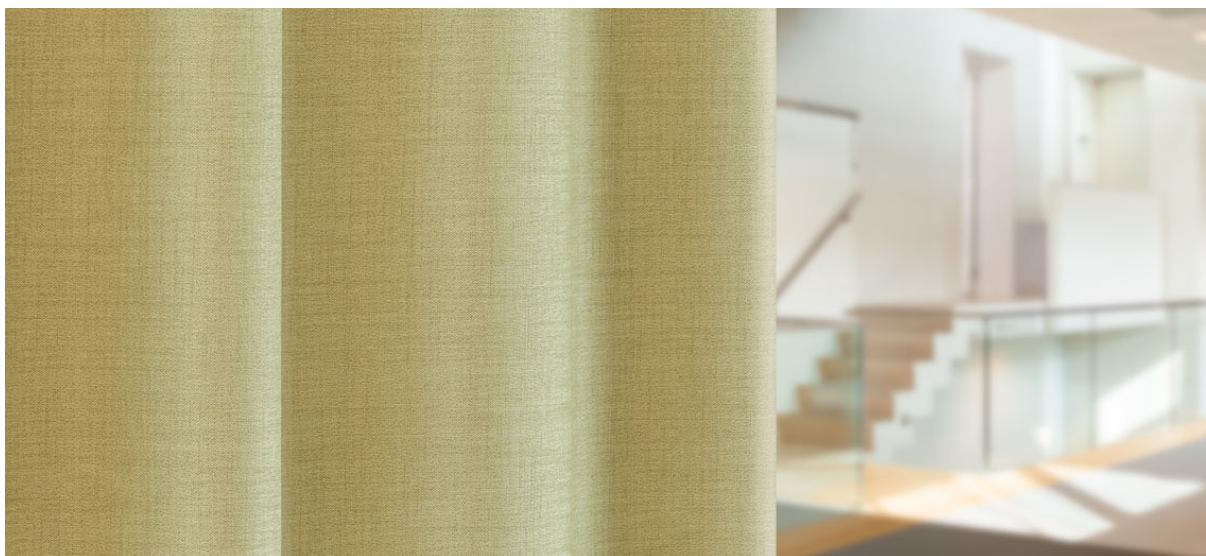


rani

dim
out

8067.01 - 8067.22



binder

curtain 02

description

structured linen look curtain fabric, dim-out

composition

100% flame retardant polyester

width

± 294 cm, ± 116 inches

weight

± 861 gr/m¹, ± 28 oz/yd¹ fabrics

thermal & visual comfort

EN 14501

class 2-3 (scale 1-4)

AATCC 148

99% light blocked

flame retardancy

EN 13773, class 1**BS 5867-2, type C****NF P 92/503-507, M1****DIN 4102, B1****UNI VF 8456-8457, classe 1****NFPA 701****CAN/ULC S109****IMO 2010 FTP part 7**

colorfastness to crocking

ISO 105-X12

wet 4-5 / dry 4-5 (scale 1-5)

AATCC 8

wet 5 / dry 5 (scale 1-5)

colorfastness to light

ISO 105-B02

5 (scale 1 - 8)

AATCC 16.3: 60 hours

2.5 (scale 1-5)

seam slippage

ASTM D434

warp 53.5 lbs / weft 48 lbs

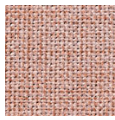
care

**shrinkage: warp -0.8% / weft -0.4%****shrinkage: warp -1.6% / weft -0.7%**

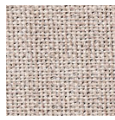


rani

8067.01 - 8067.22



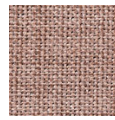
8067.01



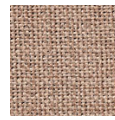
8067.02



8067.03



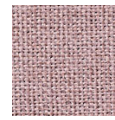
8067.04



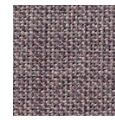
8067.05



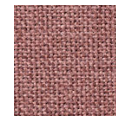
8067.06



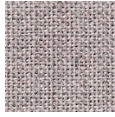
8067.07



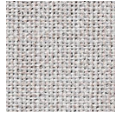
8067.08



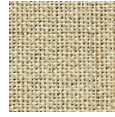
8067.09



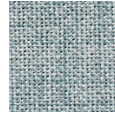
8067.10



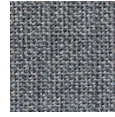
8067.11



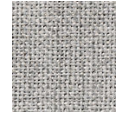
8067.12



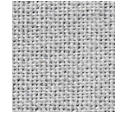
8067.13



8067.14



8067.15



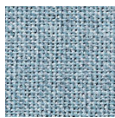
8067.16



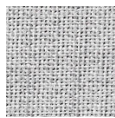
8067.17



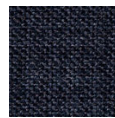
8067.18



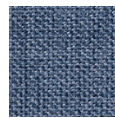
8067.19



8067.20



8067.21



8067.22