

koro



8068.01 - 8068.12



binder

curtain 02

description

structured herringbone pattern, curtain fabric, dim out

composition

100% flame retardant polyester

width

± 294 cm, ± 116 inches

weight

± 861 gr/m¹, ± 28 oz/yd¹ fabrics

thermal & visual comfort

EN 14501

class 2-3 (scale 1-4)

AATCC 148

99% light blocked

flame retardancy

EN 13773, class 1

BS 5867 - 2, type C

NF P 92 / 503 - 507, M1

DIN 4102, B1

UNI VF 8456 - 8457, classe 1

NFPA 701

CAN / ULC S109

IMO 2010 FTP part 7

colorfastness to crocking

ISO 105-X12

wet 4-5 / dry 4-5 (scale 1-5)

AATCC 8

wet 5 / dry 5 (scale 1-5)

colorfastness to light

ISO 105-B02

5 (scale 1-8)

AATCC 16.3: 60 hours

2.5 (scale 1-5)

seam slippage

ASTM D434

53.5 lbs warp / 48 lbs weft

care



shrinkage: warp -0.8% / weft -0.4%



shrinkage: warp -1.6% / weft -0.7%



koro

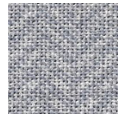
8068.01 - 8068.12



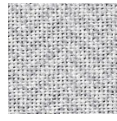
8068.01



8068.02



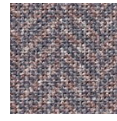
8068.03



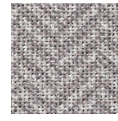
8068.04



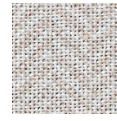
8068.05



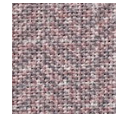
8068.06



8068.07



8068.08



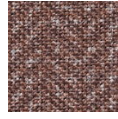
8068.09



8068.10



8068.11



8068.12