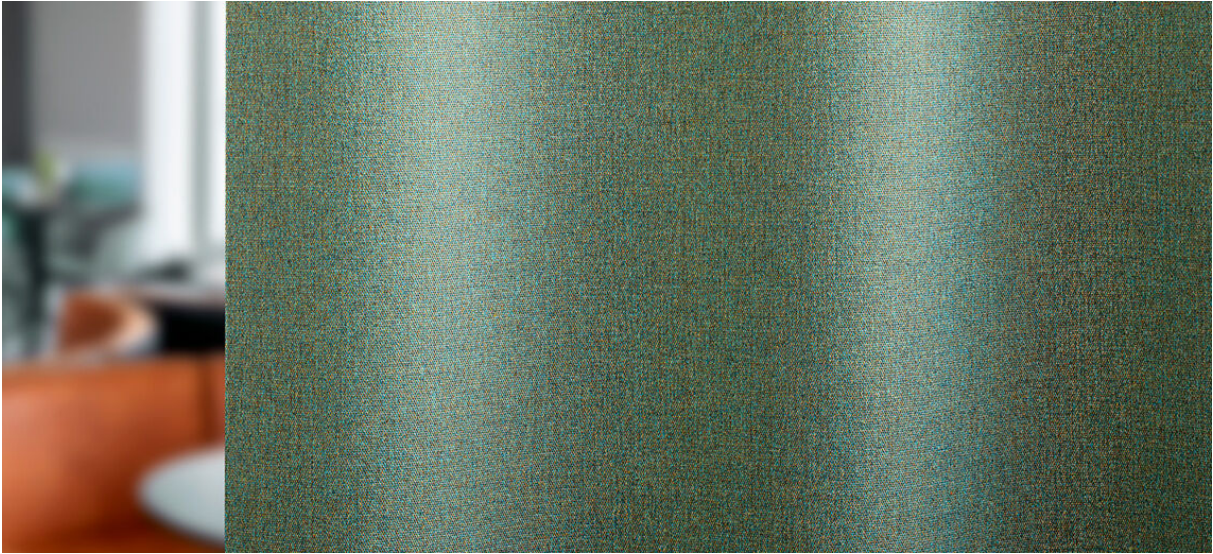


tula

8081.01 - 8081.16



binder

curtain 01

description

subtle coloured melange structure in a dry wooly look and feel

composition

100% flame retardant polyester

width

± 149 cm, ± 59 inches

weight

± 395 gr/m¹, ± 13 oz/yd¹ fabrics

sound absorption

ISO 354

alphaw 0.75 (pleated)

visual & thermal comfort

EN 410/EN 14501

flame retardancy

EN 13773, class 1

BS 5867-2, type C

NF P 92/503-507, M1

DIN 4102, B1

UNI VF 8456-8457, classe 1

IMO 2010 FTP part 7

NFPA 701

CAN/ULC S109

colorfastness to crocking

ISO 105-X12

wet 4-5 / dry 4-5 (scale 1-5)

AATCC 8

wet 5 / dry 5 (scale 1-5)

colorfastness to light

ISO 105-B02

6 (scale 1-8)

AATCC 16.3: 60 hours

5 (scale 1-5)

seam slippage

ISO 13936-2

warp 3 mm / weft 4.7 mm

ASTM D434

warp 49 lbs / weft 51 lbs

care



shrinkage: warp: -2% / weft: -1.6%

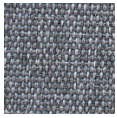


STANDARD
100
S07-0023
Hohenstein HTTI

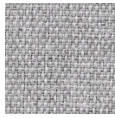


tula

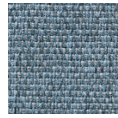
8081.01 - 8081.16



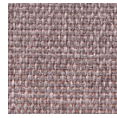
8081.01



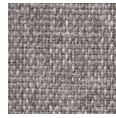
8081.02



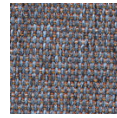
8081.03



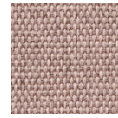
8081.04



8081.05



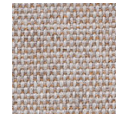
8081.06



8081.07



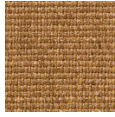
8081.08



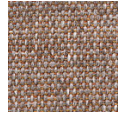
8081.09



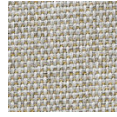
8081.10



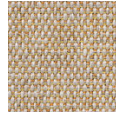
8081.11



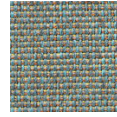
8081.12



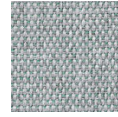
8081.13



8081.14



8081.15



8081.16