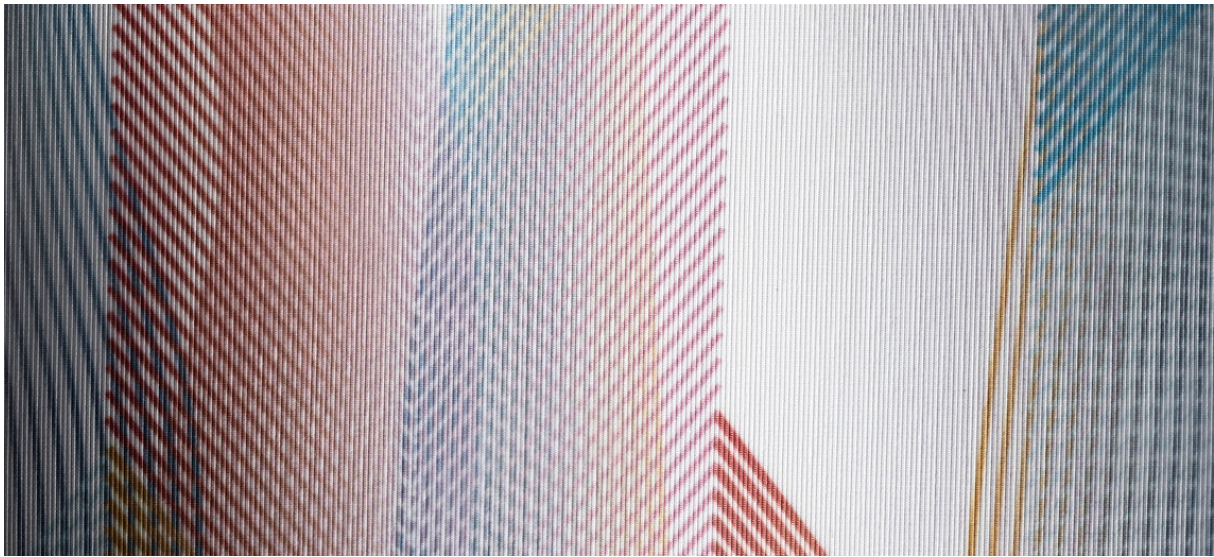


chira+print

8075.01



collection

curtain+print

description

floor-to-ceiling curtain+print sheer with an irregular yarn effect

composition

100% flame retardant polyester

width

± 300 cm, ± 18 inches

printable width

± 290 cm, ± 114 inches

weight

± 143 gr/m¹, ± 5 oz/yd¹ fabrics

visual & thermal comfort

EN 410/EN 14501

flame retardancy

EN 13773, class 1

BS 5867 - 2, type C

NF P 92 / 503 - 507, M1

DIN 4102, B1

UNI VF 8456 - 8457, classe 1

IMO 2010 FTP part 7

NFPA 701

CAN ULC S109

colorfastness to crocking

ISO 105 X12

wet 4-5 / dry 4-5 (scale 1-5)

AATCC 8

wet 5 / dry 5 (scale 1-5)

colorfastness to light

ISO 105 B02

6 (scale 1-8)

AATCC 16.3: 60 hours

4-5 (scale 1-5)

additional information

This image is not part of our collection, but should be regarded as an example.

care



shrinkage: warp -0.5% / weft -0.3%



shrinkage: warp -0.8% / weft -0.5%



STANDARD
100
S07-0023
Hohenstein HTTI



Universität Wien (2012)
Institutionen für Nachhaltigkeit

chira+print

8075.01



8075.01