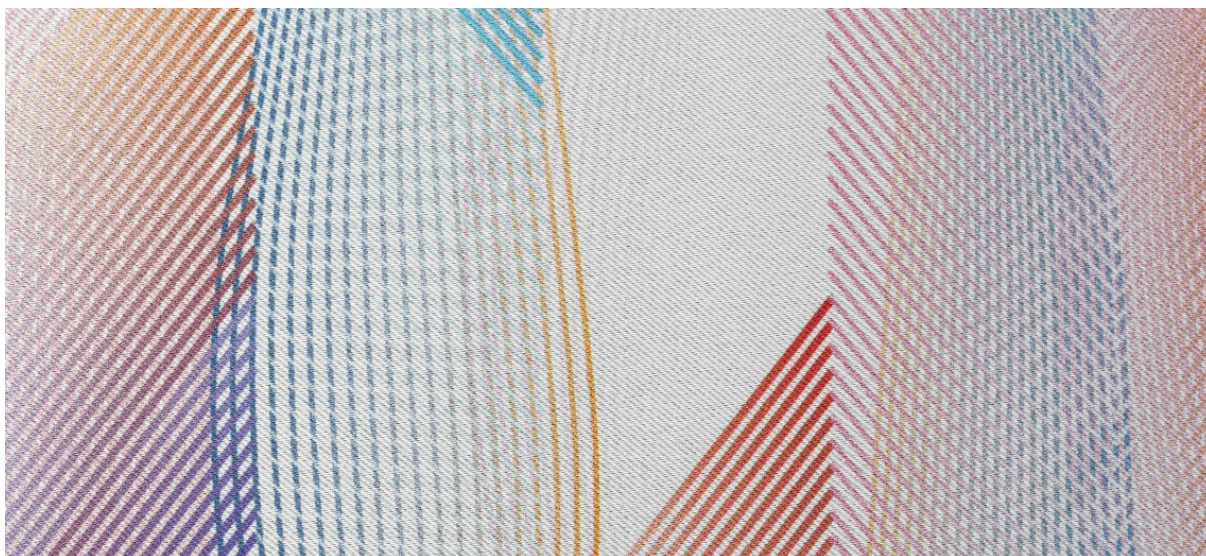


# bedra+print

8061.01



collection

**curtain+print**

description

**floor-to-ceiling curtain+print dim out with a soft sheen**

composition

**100% flame retardant polyester**

width

**± 290 cm, ± 114 inches**

printable width

**± 280 cm, ± 110 inches**

weight

**± 782 gr/m<sup>1</sup>, ± 25 oz/yd<sup>1</sup> fabrics**

visual & thermal comfort

**EN 410/EN 14501**

**AATCC 148**

flame retardancy

**EN 13773, class 1**

**BS 5867 – 2, type C**

**NF P 92 / 503 – 507, M1**

**DIN 4102, B1**

**UNI VF 8456 – 8457, classe 1**

**NFPA 701**

**CAN / ULC S109**

**IMO 2010 FTP part 7**

colorfastness to crocking

**ISO 105-X12**

wet 5 / dry 5 (scale 1–5)

**AATCC 8**

wet 5 / dry 5 (scale 1–5)

colorfastness to light

**ISO 105-B02**

6 (scale 1–8)

**AATCC 16.3: 60 hours**

4-5 (scale 1–5)

seam slippage

**ASTM D434**

warp 43.5 lbs / weft 48 lbs

additional information

**This image is not part of our collection, but should be regarded as an example.**

care



**shrinkage: warp -0.4% / weft -1.4%**



**shrinkage: warp -2.5% / weft -1.5%**



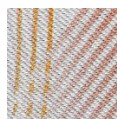
STANDARD  
100  
S07-0023  
Hohenstein HTTI



# bedra+print

8061.01

---



8061.01