

nauru

7003.01 - 7003.25



binder

upholstery 01

description

**an unstructured design with bouclé look
and subtle gloss in fresh colours**

composition

100% flame retardant polyester

width

± 140 cm, ± 55 inches

weight

± 784 gr/m¹, ± 25 oz/yd¹ fabrics

flame retardancy

EN 1021/1-2

BS 5852, crib 5

NF P 92/503-507, M1

DIN 4102, B1

IMO 2010 FTP part 8

UNI 9175, classe 1

Cal TB 117

NFPA 260, class 1

abrasion

ISO 12947-2

60.000 rubs martindale

ASTM D4157

55.000 double rubs wyzenbeek

pilling

ISO 12945-2

4 (scale 1-5)

ASTM D3511

4.5 (scale 1-5)

colorfastness to crocking

ISO 105-X12

wet 4-5 / dry 4-5 (scale 1-5)

AATCC 8

wet 5 / dry 5 (scale 1-5)

colorfastness to light

ISO 105-B02

light 6 / dark 6-7 (scale 1-8)

AATCC 16.3: 40 hours

5 (scale 1-5)

seam slippage

ISO 13936 - 2

warp 2.3 mm / weft 2.3 mm

ASTM D4034

warp 77 lbs / weft 79 lbs

breaking strength

ASTM D5034

warp 250 lbs / weft 188 lbs

care





nauru

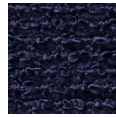
7003.01 - 7003.25



7003.02



7003.03



7003.15



7003.10



7003.24



7003.25



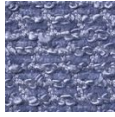
7003.21



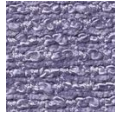
7003.17



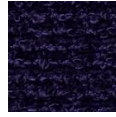
7003.01



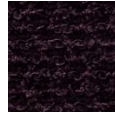
7003.13



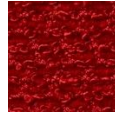
7003.23



7003.19



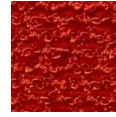
7003.12



7003.11



7003.09



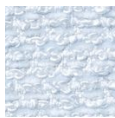
7003.08



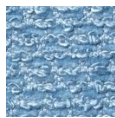
7003.22



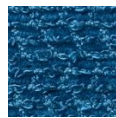
7003.18



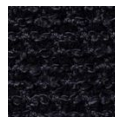
7003.14



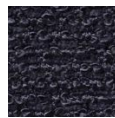
7003.16



7003.20



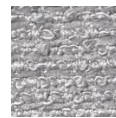
7003.06



7003.05



7003.07



7003.04