

lombok

7005.01 - 7005.23



binder

upholstery 01

description

traditional, finer structure with bi-colour effect in warm colours

composition

100% flame retardant polyester

width

± 140 cm, ± 55 inches

weight

± 527 gr/m¹, ± 17 oz/yd¹ fabrics

flame retardancy

EN 1021/1-2

BS 5852, crib 5

NF P 92/503-507, M1

DIN 4102, B1

IMO 2010 FTP part 8

UNI 9175, classe 1 IM

Cal TB 117

NFPA 260, class 1

abrasion

ISO 12947-2

20.000 rubs martindale

ASTM D4157

35.000 double rubs wyzenbeek

pilling

ISO 12945-2

4-5 (scale 1-5)

ASTM D3511

5 (scale 1-5)

colorfastness to crocking

ISO 105-X12

wet 4-5 / dry 4-5 (scale 1-5)

AATCC 8

wet 5 / dry 5 (scale 1-5)

colorfastness to light

ISO 105-B02

light 6 / dark 6-7 (scale 1-8)

AATCC 16.3: 40 hours

3 (scale 1-5)

seam slippage

ISO 13936 - 2

warp 2.3 mm / weft 2 mm

ASTM D4034

warp 102 lbs / weft 85 lbs

breaking strength

ASTM D5034

warp 190 lbs / weft 191 lbs

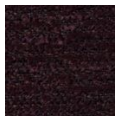
care





lombok

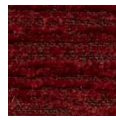
7005.01 - 7005.23



7005.09



7005.12



7005.13



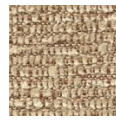
7005.10



7005.17



7005.18



7005.14



7005.15



7005.23



7005.22



7005.21



7005.19



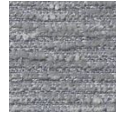
7005.20



7005.16



7005.02



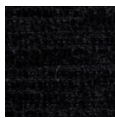
7005.01



7005.03



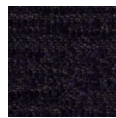
7005.04



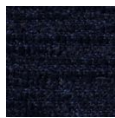
7005.11



7005.06



7005.08



7005.07



7005.05