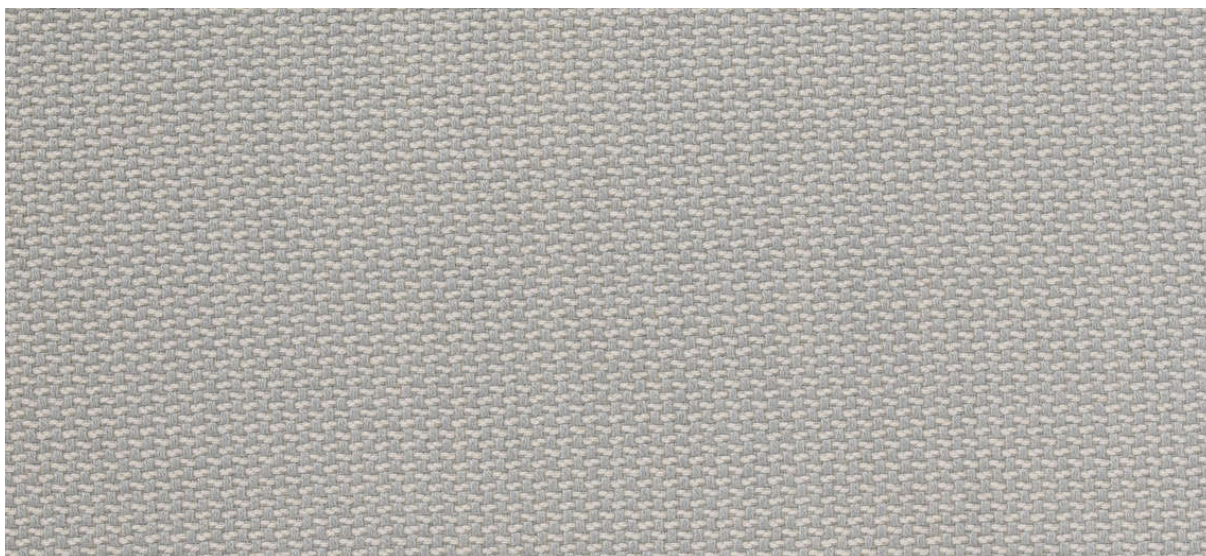


lindau

double
faced

7028.01 - 7028.33



binder

upholstery 02

description

2-colour woollen upholstery fabric that can be used on both sides

composition

80% wool / 20% polyamide

width

± 140 cm, ± 55 inches

weight

± 536 gr/m¹, ± 17 oz/yd¹ fabrics

flame retardancy

EN 1021/1-2**BS 5852, crib 5****UNI 9175, classe 1 IM****Cal TB 117****NFPA 260, class 1****IMO 2010 FTP part 8****NF D 60-013 - AM18**

abrasion

ISO 12947-2

100.000 rubs martindale

ASTM D4157

45.000 double rubs wyzenbeek

pilling

ISO 12945-2

3 (scale 1-5)

ASTM D3511

2,5 (scale 1-5)

colorfastness to crocking

ISO 105-X12

wet 4 / dry 4-5 (scale 1-5)

AATCC 8

wet 5 / dry 4.5 (scale 1-5)

colorfastness to light

ISO 105-B02

light 4-5 / dark 4-5 (scale 1-8)

AATCC 16.3: 40 hours

5 (scale 1-5)

seam slippage

ISO 13936 - 2

warp 4 mm / weft 3.5 mm

ASTM D4034

warp 39 lbs / weft 89 lbs

breaking strength

ASTM D5034

warp 186 lbs / weft 224 lbs

care



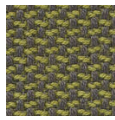


lindau

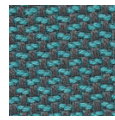
7028.01 - 7028.33



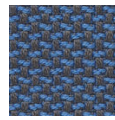
7028.01



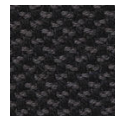
7028.15



7028.13



7028.04



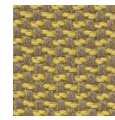
7028.09



7028.22



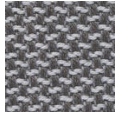
7028.19



7028.20



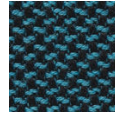
7028.26



7028.02



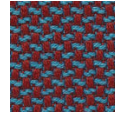
7028.14



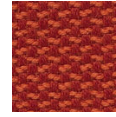
7028.10



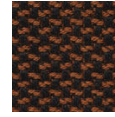
7028.08



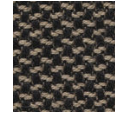
7028.18



7028.21



7028.23



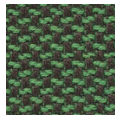
7028.32



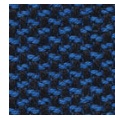
7028.30



7028.03



7028.12



7028.07



7028.11



7028.31



7028.28



7028.24



7028.29



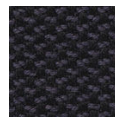
7028.33



7028.06



7028.05



7028.16



7028.17



7028.27



7028.25