

togo

7031.01 - 7031.24



binder

upholstery 01

description

unpatterned mohair/silk upholstery fabric design

composition

70% mohair / 30% silk (base: cotton)

width

± 140 cm, ± 55 inches

weight

± 765 gr/m¹, ± 25 oz/yd¹ fabrics

flame retardancy

EN 1021/1-2

BS 5852, crib 5

UNI 9175, classe 1 IM

Cal TB 117

NFPA 260, class 1

NF P 92503-507, M1 with FR finish

abrasion

ISO 12947-2

85.000 rubs martindale

ASTM D4157

45.000 double rubs wyzenbeek

pilling

ASTM D3511

5 (scale 1-5)

colorfastness to crocking

AATCC 8

wet 4.5 / dry 5 (scale 1-5)

colorfastness to light

ISO 105-B02

light 3-4 / dark 4-5 (scale 1-8)

AATCC 16.3: 40 hours

2.5 (scale 1-5)

seam slippage

ASTM D4034

warp 85 lbs / weft 80 lbs

breaking strength

ASTM D5034

warp 87 lbs / weft 137 lbs

additional information

cradle to cradle bronze certified

care



dry clean only



togo

7031.01 - 7031.24



7031.01



7031.02



7031.14



7031.03



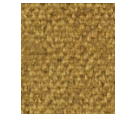
7031.06



7031.09



7031.04



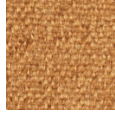
7031.05



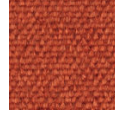
7031.08



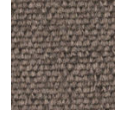
7031.16



7031.15



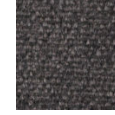
7031.18



7031.17



7031.07



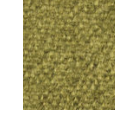
7031.10



7031.12



7031.13



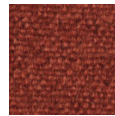
7031.11



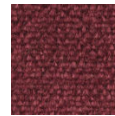
7031.24



7031.21



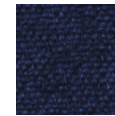
7031.20



7031.19



7031.23



7031.22