

bowen

7030.01 - 7030.39



binder

upholstery 01

description

blended woollen upholstery fabric

composition

92% wool / 8% polyamide

width

± 140 cm, ± 55 inches

weight

± 530 gr/m¹, ± 17 oz/yd¹ fabrics

flame retardancy

EN 1021/1-2

BS 5852, crib 5

UNI 9175, classe 1 IM

Cal TB 117-2013

NFPA 260, class 1

NF D 60-013 - AM18

IMO 2010 FTP part 8

abrasion

ISO 12947-2

100.000 rubs martindale

ASTM D4157

35.000 double rubs wyzenbeek

pilling

ISO 12945-2

4 (scale 1-5)

ASTM D3511

5 (scale 1-5)

colorfastness to crocking

ISO 105-X12

wet 4-5 / dry 4-5 (scale 1-5)

AATCC 8

wet 5 / dry 5 (scale 1-5)

colorfastness to light

ISO 105-B02

4 - 5 (scale 1-8)

AATCC 16.3

5 (scale 1-5)

seam slippage

ISO 13936 - 2

warp 5 mm / weft 4.5 mm

ASTM D4034

warp 120 lbs / weft 87 lbs

breaking strength

ASTM D5034

warp 212 lbs / weft 191 lbs

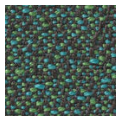
care





bowen

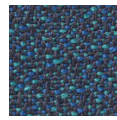
7030.01 - 7030.39



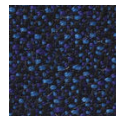
7030.14



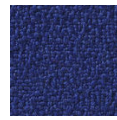
7030.13



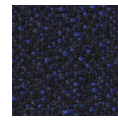
7030.10



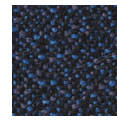
7030.06



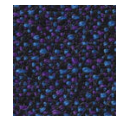
7030.05



7030.09



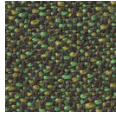
7030.12



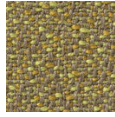
7030.01



7030.02



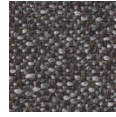
7030.15



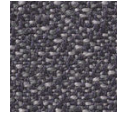
7030.16



7030.17



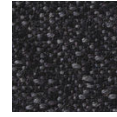
7030.04



7030.03



7030.08



7030.11



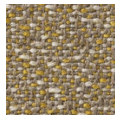
7030.07



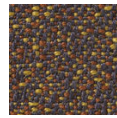
7030.21



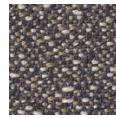
7030.35



7030.32



7030.34



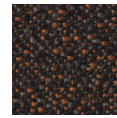
7030.20



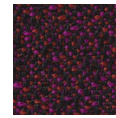
7030.24



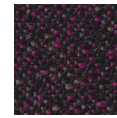
7030.36



7030.31



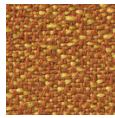
7030.30



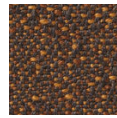
7030.27



7030.33



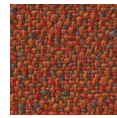
7030.19



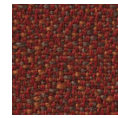
7030.29



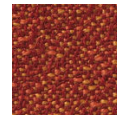
7030.23



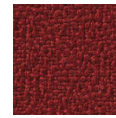
7030.26



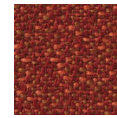
7030.28



7030.18



7030.25



7030.22



7030.37



7030.39



7030.38