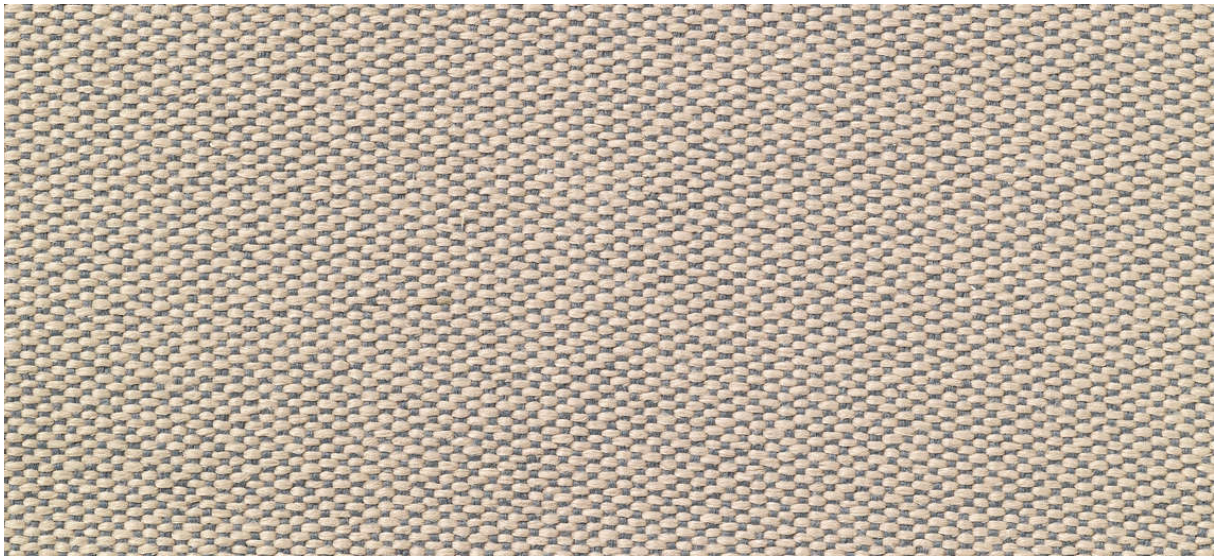


deans



7048.01 - 7048.15



binder

upholstery 02

description

double faced upholstery, with a plain look on one side and a mélange pattern on the other side

composition

100% flame retardant polyester

width

± 138 cm, ± 54 inches

weight

± 861 gr/m¹, ± 28 oz/yd¹ fabrics

flame retardancy

EN 1021/ 1- 2

BS 5852, crib 5

NF P 92 / 503 - 507, M1

DIN 4102, B1

IMO 2010 FTP part 8

UNI 9175, classe 1 IM

Cal TB 117

NFPA 260, class 1

abrasion

ISO 12947-2

110.000 rubs martindale

ASTM D4157

100.000 double rubs wyzenbeek

pilling

ISO 12945-2

4 (scale 1-5)

ASTM D3511

5 (scale 1-5)

colorfastness to crocking

ISO 105-X12

wet 4-5 / dry 4-5 (scale 1-5)

AATCC 8

wet 5 / dry 5 (scale 1-5)

colorfastness to light

ISO 105-B02

6-7 (scale 1-8)

AATCC 16.3: 40 hours

5 (scale 1-5)

seam slippage

ISO 13936-2

warp 4.3 mm/ weft 3 mm

ASTM D4034

warp 39 lbf / weft 85 lbf

breaking strength

ASTM D5034

warp 560 lbs / weft 560 lbs

care



shrinkage: warp -1.4% / weft -2%



shrinkage: warp -2% / weft -3%



deans

7048.01 - 7048.15

