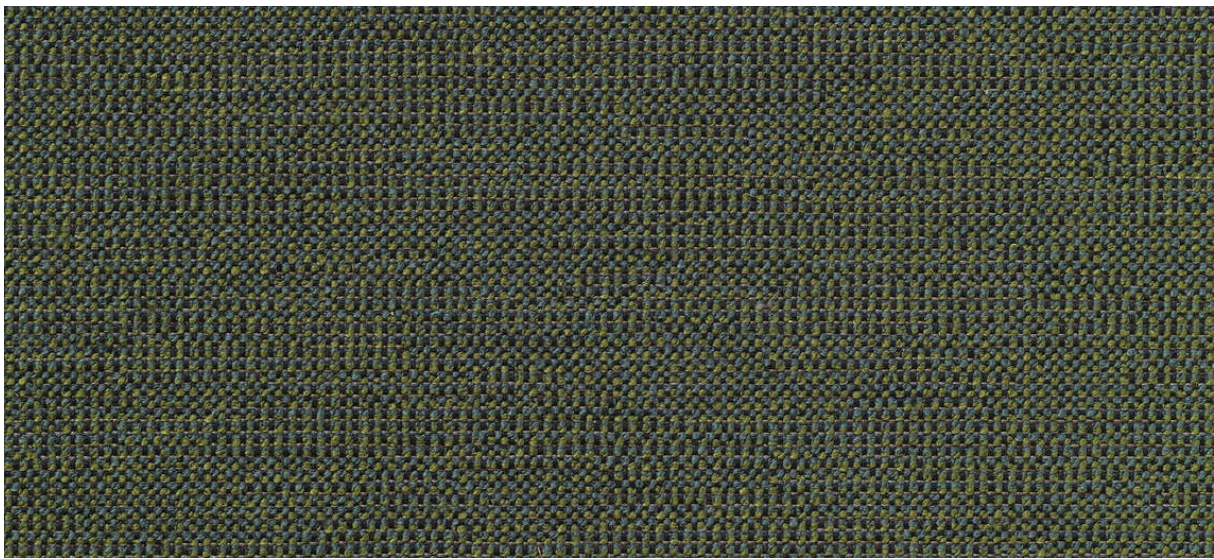


# eliot

7046.01 - 7046.18



binder

**upholstery 02**

description

**fine structured bouclé upholstery fabric in fresh colors**

composition

**100% flame retardant polyester**

width

**± 137 cm, ± 54 inches**

weight

**± 708 gr/m<sup>1</sup>, ± 23 oz/yd<sup>1</sup> fabrics**

flame retardancy

**EN 1021/ 1-2**

**BS 5852, crib 5**

**NF P 92 / 503 - 507, M1**

**DIN 4102, B1**

**UNI 9175, classe 1 IM**

**Cal TB 117**

**NFPA 260, class 1**

**IMO 2010 FTP part 8**

abrasion

**ISO 12947-2**

110.000 rubs martindale

**ASTM D4157**

100.000 double rubs wyzenbeek

pilling

**ISO 12945-2**

4 (scale 1-5)

**ASTM D3511**

4 (scale 1-5)

colorfastness to crocking

**ISO 105-X12**

wet 4 - 5 / dry 4 - 5 (scale 1-5)

**AATCC 8**

wet 5 / dry 5 (scale 1-5)

colorfastness to light

**ISO 105-B02**

6 (scale 1-8)

**AATCC 16.3: 40 hours**

5 (scale 1-5)

seam slippage

**ISO 13936 - 2**

warp 4.7 mm / weft 3 mm

**ASTM D4034**

warp 77 lbs / weft 115 lbs

breaking strength

**ASTM D5034**

warp 195 lbs / weft 329 lbs

care



**shrinkage: warp -0.7% / weft -1.1%**



**shrinkage: warp -1.6% / weft -2.4%**

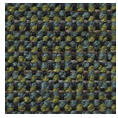


**CONFIDENCE  
IN TEXTILES**  
Tested for harmful substances  
according to Oeko-Tex® Standard 100

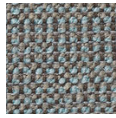
# eliot

7046.01 - 7046.18

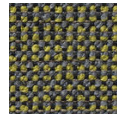
---



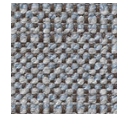
7046.01



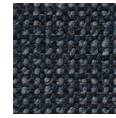
7046.02



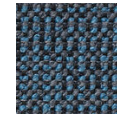
7046.03



7046.04



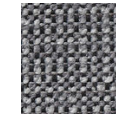
7046.05



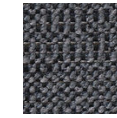
7046.06



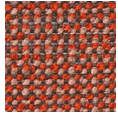
7046.07



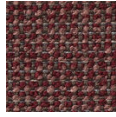
7046.08



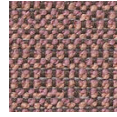
7046.09



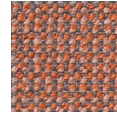
7046.10



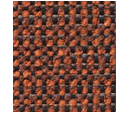
7046.11



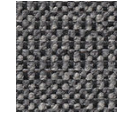
7046.12



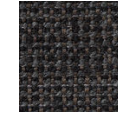
7046.13



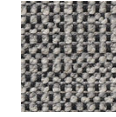
7046.14



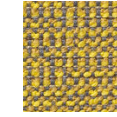
7046.15



7046.16



7046.17



7046.18