

# burton

7056.01 - 7056.23



collection

**upholstery  
textile**

description

**two-tone woven unpatterned fabric with a blended effect**

composition

**100% flame retardant polyester**

width

**± 140 cm, ± 55 inches**

weight

**± 763 gr/m<sup>1</sup>, ± 25 oz/yd<sup>1</sup> fabrics**

flame retardancy

**EN 1021/ 1-2**

**BS 5852, crib 5**

**NF P 92 / 503 - 507, M1**

**DIN 4102, B1**

**UNI 9175, classe 1 IM**

**Cal TB 117**

**NFPA 260, class 1**

**IMO 2010 FTP part 8**

abrasion

**ISO 12947-2**

80.000 rubs martindale

**ASTM D4157**

100.000 double rubs wyzenbeek

pilling

**ISO 12945-2**

4 (scale 1-5)

**ASTM D3511**

4 (scale 1-5)

colorfastness to crocking

**ISO 105-X12**

wet 4 - 5 / dry 4 - 5 (scale 1-5)

**AATCC 8**

wet 5 / dry 5 (scale 1-5)

colorfastness to light

**ISO 105-B02**

6 - 7 (scale 1-8)

**AATCC 16.3: 40 hours**

4.5 (scale 1-5)

seam slippage

**ISO 13936 - 2**

warp 3 mm / weft 2.7 mm

**ASTM D4034**

warp 101 lbs / weft 107 lbs

breaking strength

**ASTM D5034**

warp 365 lbs / weft 289 lbs

care



**shrinkage: warp -0.7% / weft -0.6%**



**shrinkage: warp -1.8% / weft -2.2%**



STANDARD  
100

S07-0023  
Hohenstein HTTI

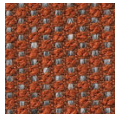
# burton

7056.01 - 7056.23

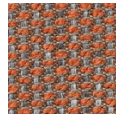
---



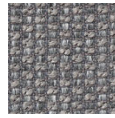
7056.01



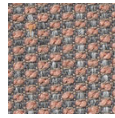
7056.02



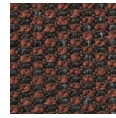
7056.03



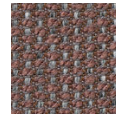
7056.04



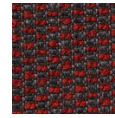
7056.05



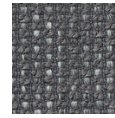
7056.06



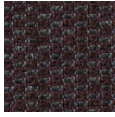
7056.07



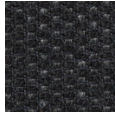
7056.08



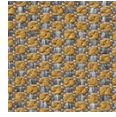
7056.09



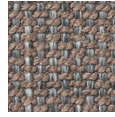
7056.10



7056.11



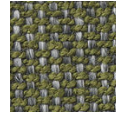
7056.12



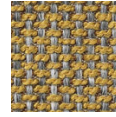
7056.13



7056.14



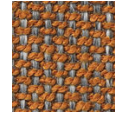
7056.15



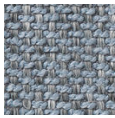
7056.16



7056.17



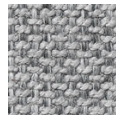
7056.18



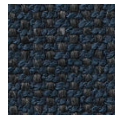
7056.19



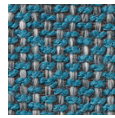
7056.20



7056.21



7056.22



7056.23