

foster

7072.01 – 7072.27



collection

**upholstery
textile**

description

**a unicoloured, universal boucle upholstery
fabric with a super-soft touch**

composition

97% recycled polyester FR / 3% polyester FR

width

± 141 cm, ± 56 inches

weight

± 749 gr/m¹, ± 24 oz/yd¹ fabrics

flame retardancy

EN 1021/1-2

BS 5852, crib 5

NF P 92 / 503 – 507, M1

DIN 4102, B1

UNI 9175, classe 1.IM

Cal TB 117

NFPA 260, class 1

IMO 2010 FTP part 8

abrasion

ISO 12947-2

60.000 rubs martindale

ASTM D4157

100.000 double rubs wyzenbeek

pilling

ISO 12945-2

4 (scale 1-5)

ASTM D3511

5 (scale 1-5)

colorfastness to crocking

ISO 105-X12

wet 4-5 / dry 4-5 (scale 1-5)

AATCC 8

wet 5 / dry 5 (scale 1-5)

colorfastness to light

ISO 105-B02

6 (scale 1-8)

AATCC 16.3: 40 hours

5 (scale 1-5)

seam slippage

ISO 13936-2

warp 4 mm / weft 2 mm

ASTM D4034

warp 51 lbs / weft 106 lbs

breaking strength

ISO 13934-1

warp 1370 N / weft 1220 N

ASTM D5034

warp 263 lbs / weft 234 lbs

care



shrinkage: warp -2% / weft -1.7%

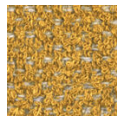


STANDARD
100

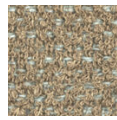
S21-3365
Hohenstein HTTI

foster

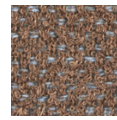
7072.01 – 7072.27



7072.01



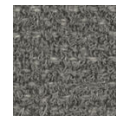
7072.02



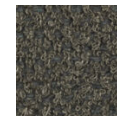
7072.03



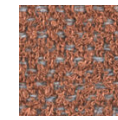
7072.04



7072.05



7072.06



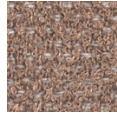
7072.07



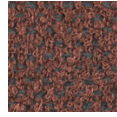
7072.08



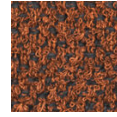
7072.09



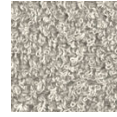
7072.10



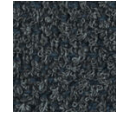
7072.11



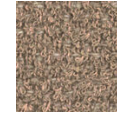
7072.12



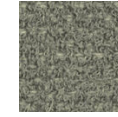
7072.13



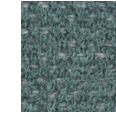
7072.14



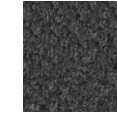
7072.15



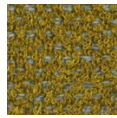
7072.16



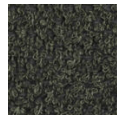
7072.17



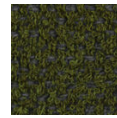
7072.18



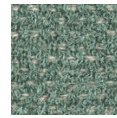
7072.19



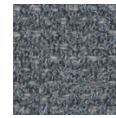
7072.20



7072.21



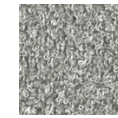
7072.22



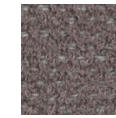
7072.23



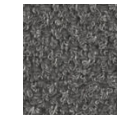
7072.24



7072.25



7072.26



7072.27