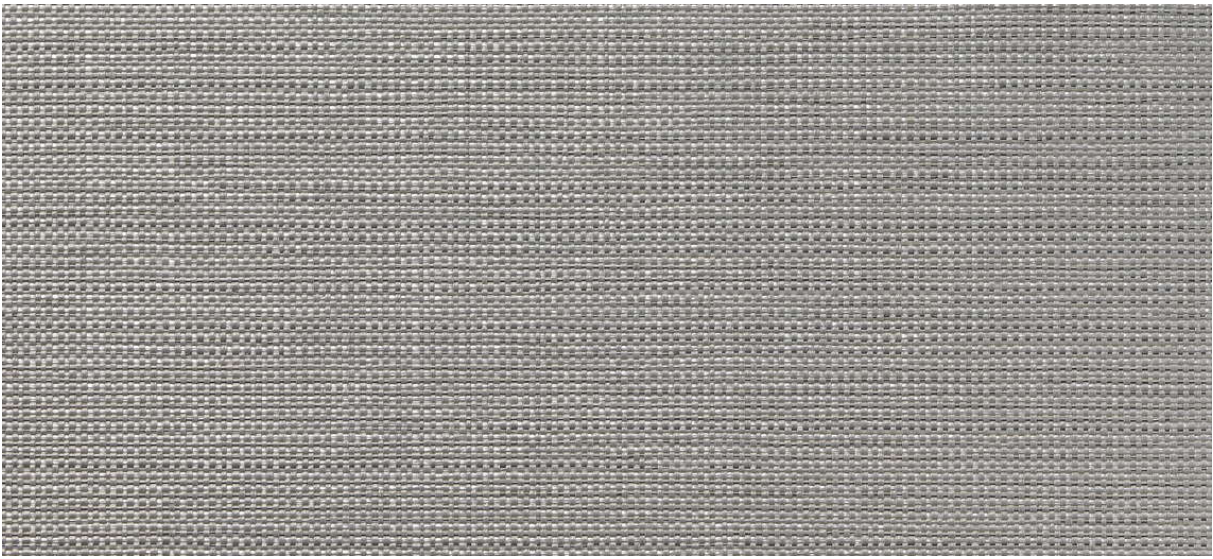


dash

2533.01 - 2533.18



collection

wallcovering

05

textile

xorel

description

semi-uni multicoloured smooth fabric

composition

100% xorel (65% biobased PE, 35% PE)

width

± 132 cm, ± 52 inches

weight

± 360 gr/m², ± 15 oz/yd¹

flame retardancy

EN 13501, B s1 d2

ASTM E84, A

additional information

cradle to cradle gold certified



Xorel is a registered trademark and license to distribute is granted by permission of Carnegie Fabrics Inc. US

dash

2533.01 - 2533.18



2533.02



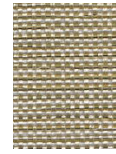
2533.03



2533.01



2533.17



2533.07



2533.10



2533.11



2533.09



2533.15



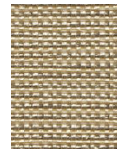
2533.06



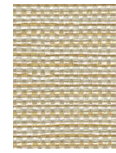
2533.14



2533.04



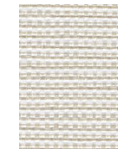
2533.16



2533.13



2533.12



2533.08



2533.05



2533.18