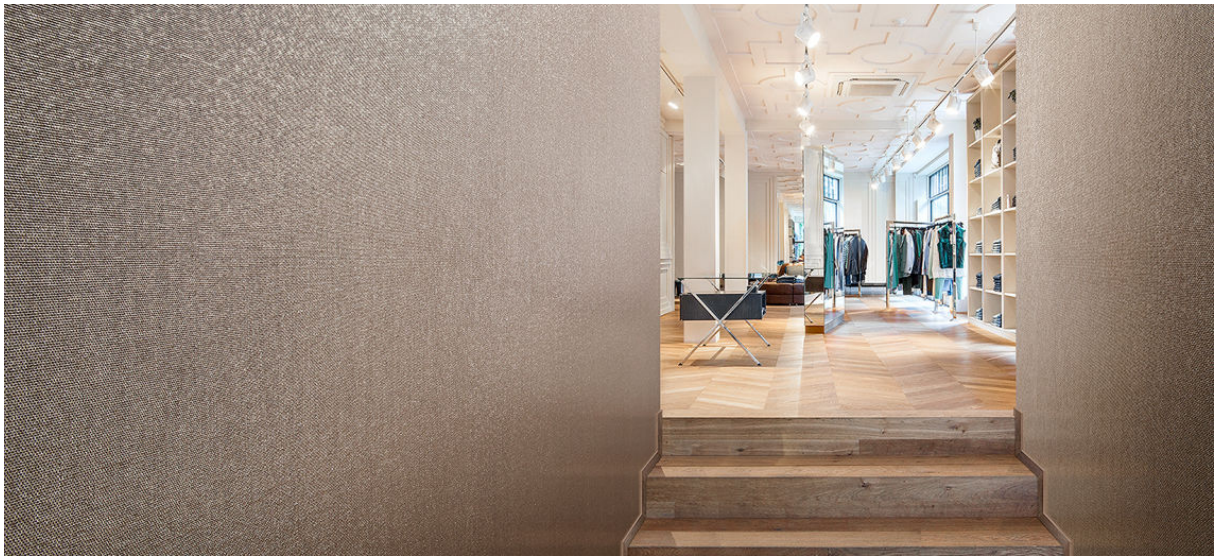


nexus

2534.01 - 2534.17



collection

wallcovering

05

textile

xorel

description

(semi-)uni smooth fabric with irregular weft

composition

100% xorel (85% biobased PE, 15% PE)

width

± 132 cm, ± 52 inches

weight

± 420 gr/m², ± 18 oz/yd¹

flame retardancy

EN 13501, B s1 d2

ASTM E84, A

additional information

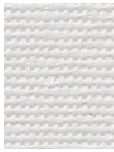
cradle to cradle gold certified

Xorel is a registered trademark and license to distribute is granted by permission of Carnegie Fabrics Inc. US



nexus

2534.01 - 2534.17



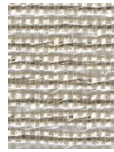
2534.01



2534.02



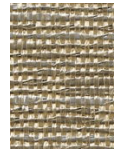
2534.03



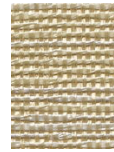
2534.08



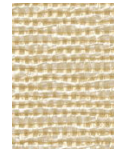
2534.16



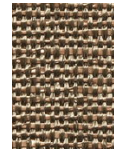
2534.14



2534.09



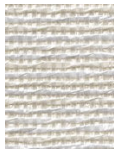
2534.06



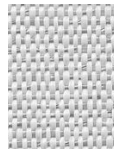
2534.17



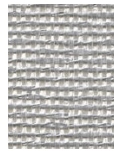
2534.04



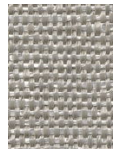
2534.05



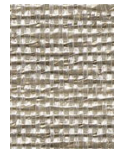
2534.07



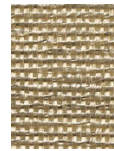
2534.10



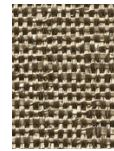
2534.13



2534.11



2534.12



2534.15