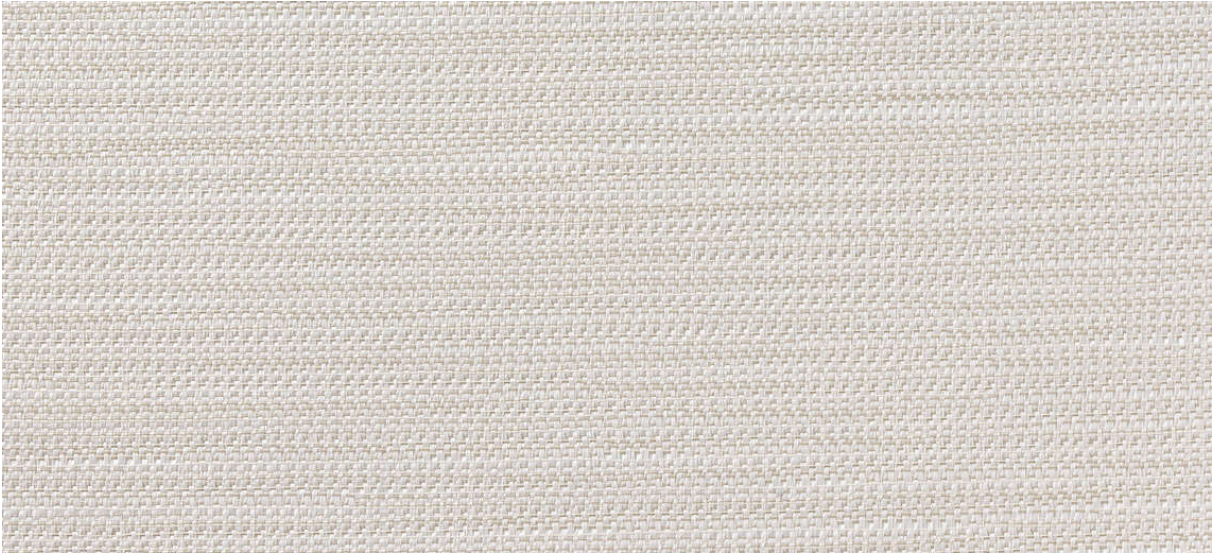


# flux

2539.01 - 2539.11



collection

**wallcovering  
textile  
xorel**



description

**semi-uni fabric with faint width effect**



composition

**100% ifr xorel (polyethylene)**



width

**± 132 cm, ± 52 inches**

weight

**± 280 gr/m<sup>2</sup>, ± 12 oz/yd<sup>1</sup>**



flame retardancy

**EN 13501, B s1 d0**

**ASTM E84, A**

water vapor permeability

**ISO 15106-3 / EN ISO 12572**

Sd value <0,5 m

additional information

**cradle to cradle gold certified**

**Xorel is a registered trademark and license to distribute is granted by permission of Carnegie Fabrics Inc. US**

# flux

2539.01 - 2539.11

---



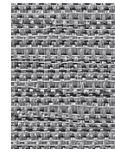
2539.01



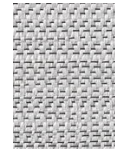
2539.05



2539.07



2539.06



2539.09



2539.11



2539.10



2539.08



2539.02



2539.04