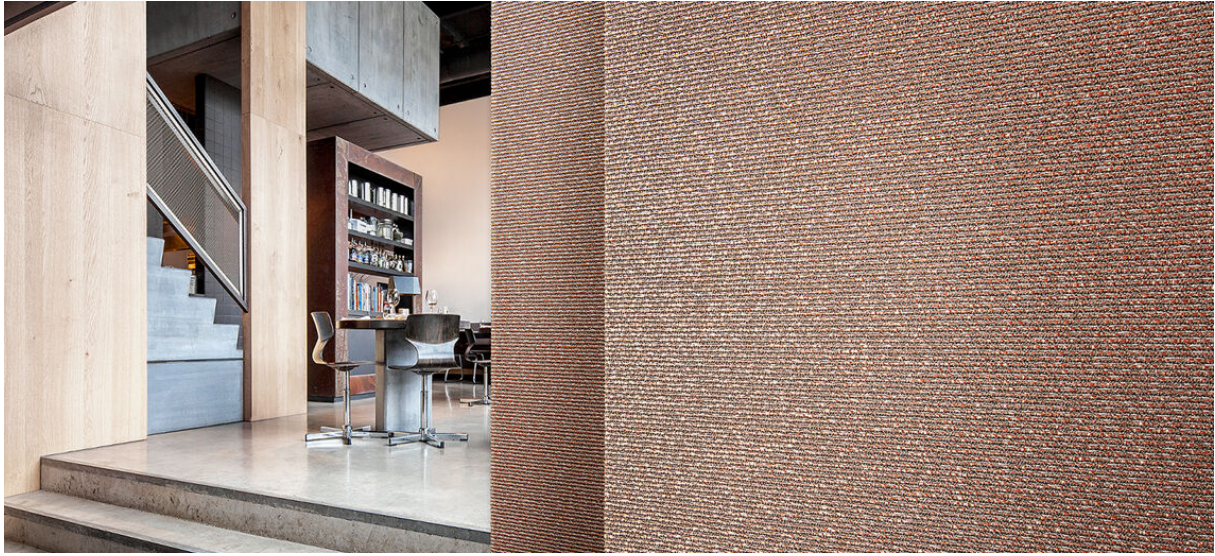


tangle

2538.02 - 2538.11



collection

wallcovering

05

textile

xorel

description

weave with a coarse width structure

composition

100% xorel (polyethylene) (58% PE, 42% biobased PE)

width

± 132 cm, ± 52 inches

weight

± 340 gr/m², ± 14 oz/yd¹

flame retardancy

EN 13501, B s1 d2

ASTM E84, A

additional information

cradle to cradle gold certified

Xorel is a registered trademark and license to distribute is granted by permission of Carnegie Fabrics Inc. US



tangle

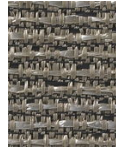
2538.02 - 2538.11



2538.02



2538.05



2538.06



2538.10



2538.07



2538.11



2538.04



2538.03