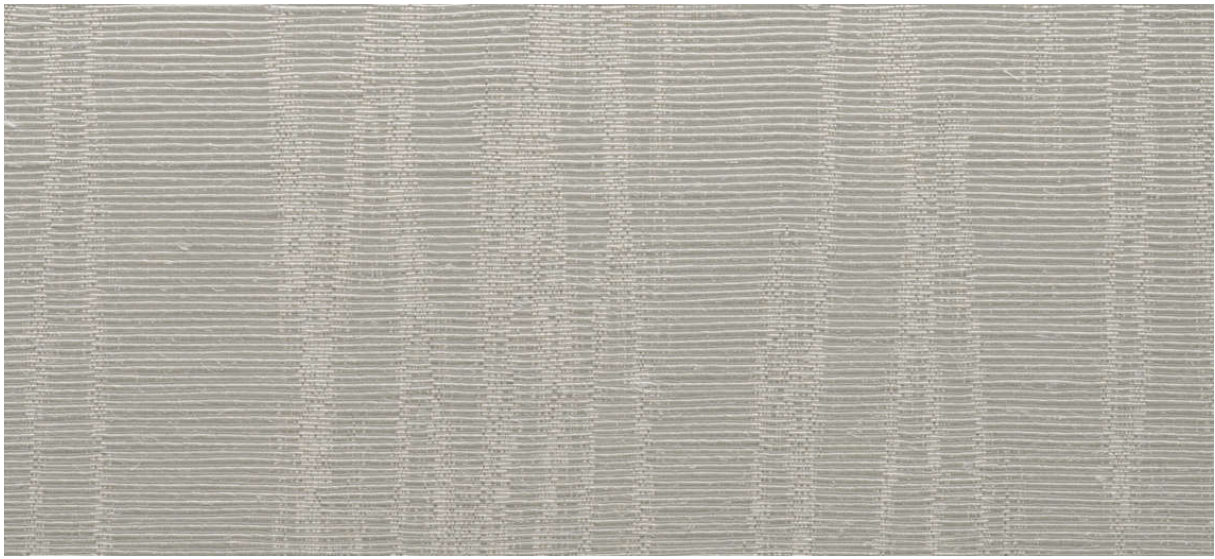


chateau chinon silky

2613.40 - 2613.44



collection

textile wallcovering VI

description

linen/polyamide with woodgrain woven effect

composition

75% linen / 25% polyamide

width

± 137 cm, ± 54 inches

weight

± 372 gr/m², ± 16 oz/yd¹

flame retardancy

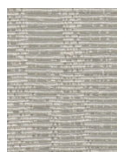
EN 13501, B s2 d0

ASTM E84, A

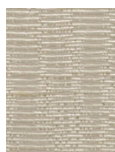


chateau chinon silky

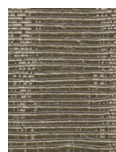
2613.40 - 2613.44



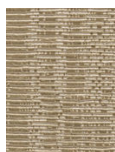
2613.43



2613.41



2613.40



2613.44



2613.42