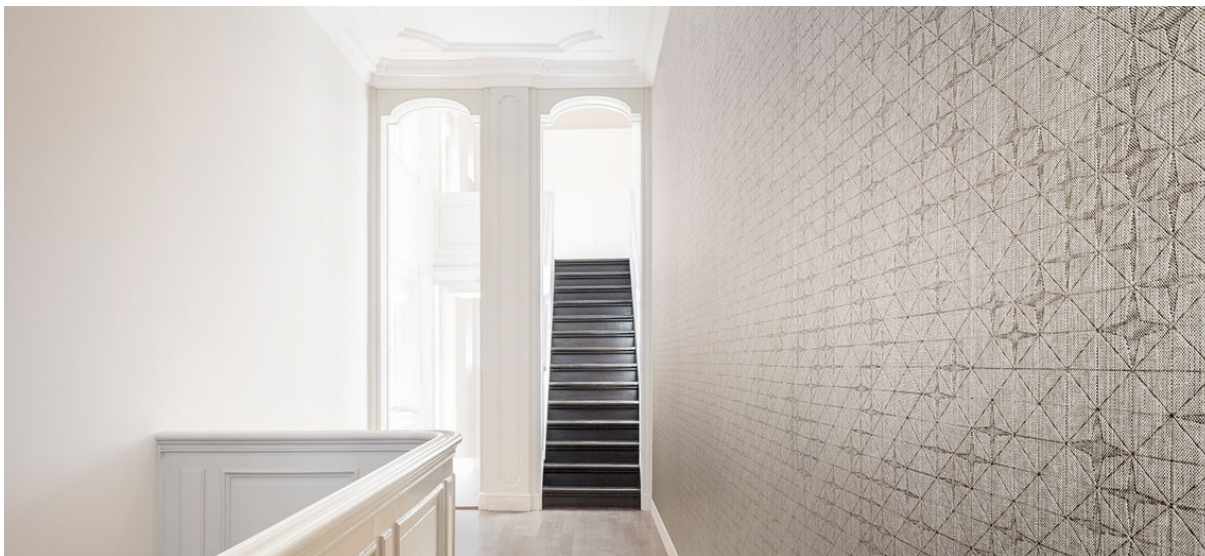


# fragment emboss

2541.01 - 2541.09



collection

wallcovering

05

textile

xorel

description

star motif arranged as a grid

composition

100% xorel® (85% biobased polyethylene, 15% polyethylene) on x-protect wall™ (paper backing)

width

± 132 cm, ± 52 inches

weight

± 376 gr/m<sup>2</sup>, ± 16 oz/yd<sup>1</sup>

pattern repeat

height: 64.8 cm, 25.5 inches

width: 65.4 cm, 25.7 inches

flame retardancy

EN 13501, B s1 d2

ASTM E84, A

additional information

cradle to cradle gold certified

Xorel is a registered trademark and license to distribute is granted by permission of Carnegie Fabrics Inc. US



# fragment emboss

2541.01 - 2541.09

---



2541.01



2541.03



2541.02



2541.04



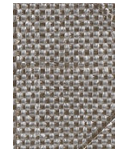
2541.05



2541.07



2541.06



2541.08



2541.09