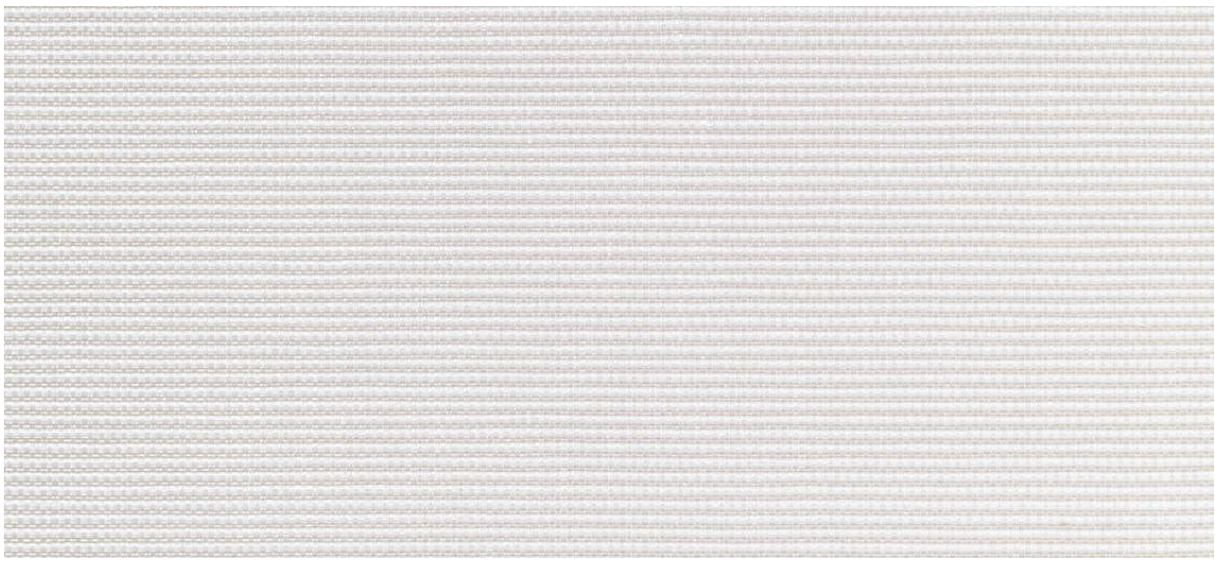


flash back

2540.01 - 2540.14



collection

wallcovering
textile
xorel

description

semi-plain dobbie weave

composition

100% xorel® (polyethylene) (77% biobased polyethylene, 23% polyethylene) on x-protect wall™ (paper backing)

width

± 132 cm, ± 52 inches

weight

± 320 gr/m², ± 14 oz/yd¹

flame retardancy

EN 13501, B s1 d2

ASTM E84, A

water vapor permeability

ISO 15106-3 / EN ISO 12572

Sd value <0,5 m

additional information

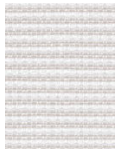
cradle to cradle gold certified

Xorel is a registered trademark and license to distribute is granted by permission of Carnegie Fabrics Inc. US

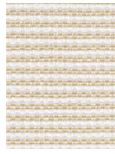


flash back

2540.01 - 2540.14



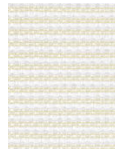
2540.07



2540.05



2540.02



2540.03



2540.08



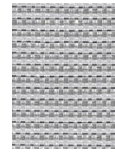
2540.12



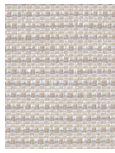
2540.13



2540.14



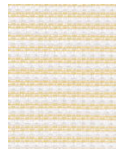
2540.09



2540.06



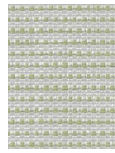
2540.04



2540.01



2540.10



2540.11