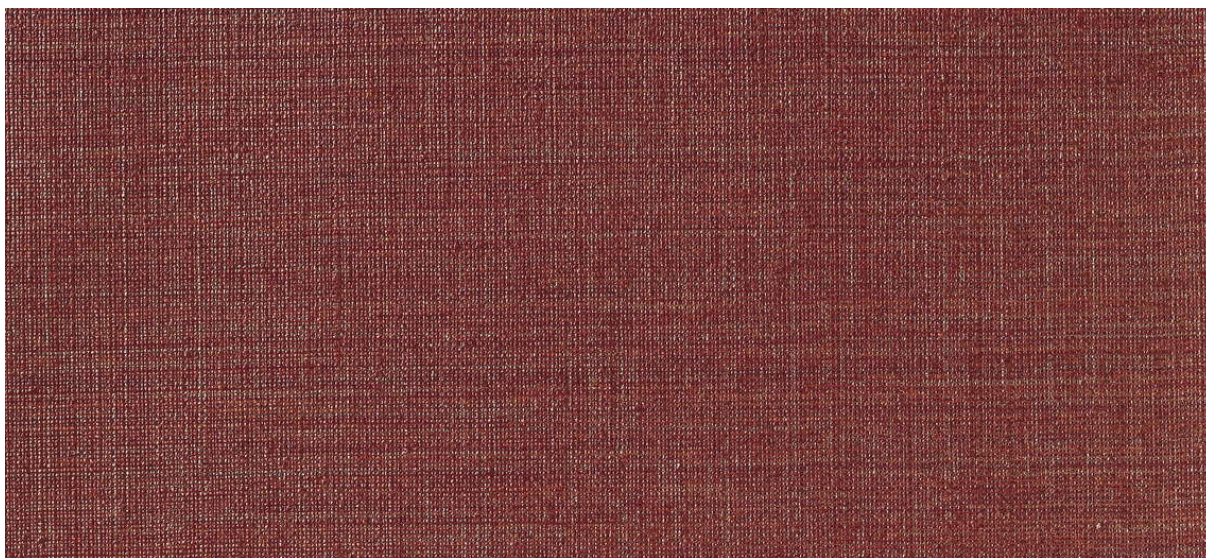


# sylvan

1072.01 - 1072.23



collection

**wallcovering**

**01**

**vinyl**

description

**side look in tone-on-tone and multicolour**

composition

**vinyl finishing coat on a woven cotton backing**

width

**± 130 cm, ± 51 inches**

weight

**± 350 gr/m<sup>2</sup>, ± 15 oz/yd<sup>1</sup>**

sound absorption

**ISO 354, alphaw 0.10**

flame retardancy

**EN 13501, B s1 d0**

**ASTM E84, A**

**NFPA 286**



**vinyl** COMMITTED TO SUSTAINABLE DEVELOPMENT

**CE** EN 15102:2007+A1:2011  
T2  
1104/305-2011 (18-11-2015)  
wallcovering

REACTION TO FIRE CLASS: EN 13501-1  
REACTION OF FORMALDEHYDE: EN 12149  
RELEASE OF HEAVY METALS: EN 12149  
RELEASE OF VINYL CHLORIDE MONOMER: EN 12149



# sylvan

1072.01 - 1072.23

---



1072.01



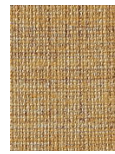
1072.02



1072.03



1072.04



1072.05



1072.06



1072.07



1072.08



1072.09



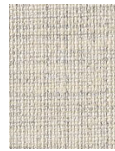
1072.10



1072.11



1072.12



1072.13



1072.14



1072.15



1072.16



1072.17



1072.18



1072.19



1072.20



1072.21



1072.22



1072.23