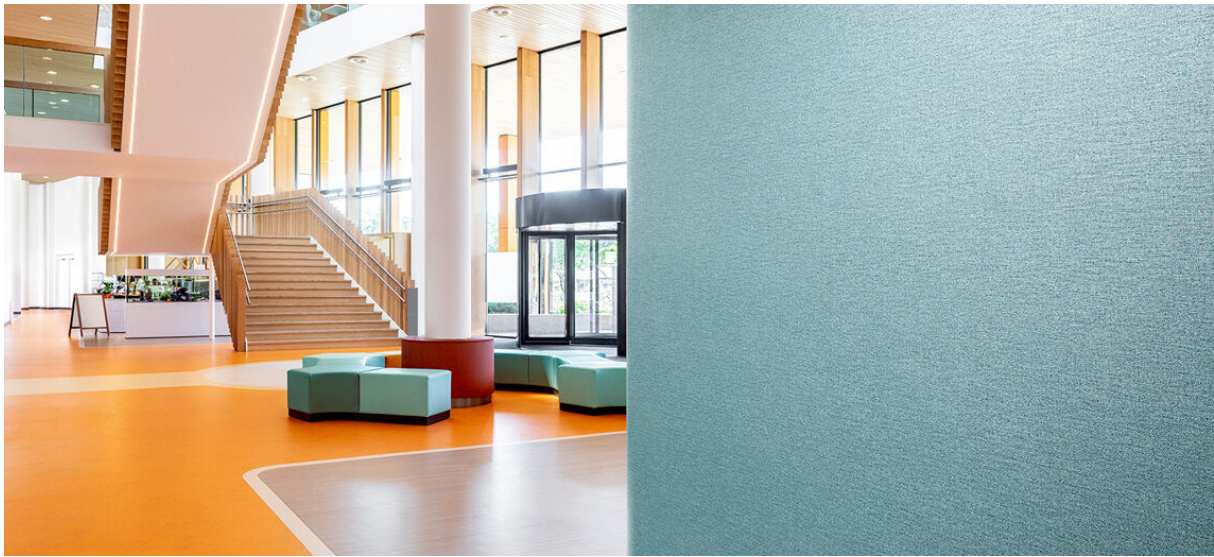


millwood

1077.01 - 1077.29



collection

**wallcovering
vinyl**

description

three-coloured irregular linen look

composition

**vinyl finishing coat on a woven cotton
backing**

width

± 130 cm, ± 51 inches

weight

± 350 gr/m², ± 15 oz/yd¹

sound absorption

ISO 354, alphaw 0.10

flame retardancy

EN 13501, B s1 d0

IMO 2010 FTP part 2-5

ASTM E84, A

NFPA 286

water vapor permeability

ISO 15106-3 / EN ISO 12572

Sd value ± 9 m



vinyl COMMITTED TO
SUSTAINABLE DEVELOPMENT

CE EN 15102

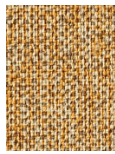


millwood

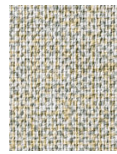
1077.01 - 1077.29



1077.01



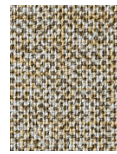
1077.02



1077.03



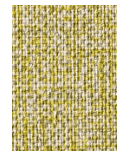
1077.04



1077.05



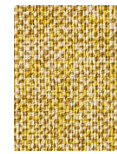
1077.06



1077.07



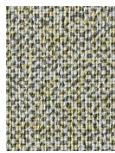
1077.08



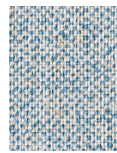
1077.09



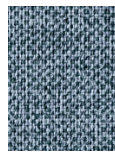
1077.10



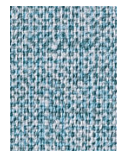
1077.11



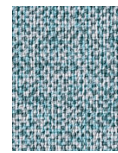
1077.12



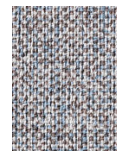
1077.13



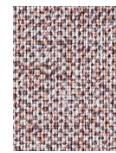
1077.14



1077.15



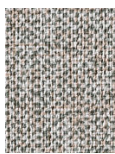
1077.16



1077.17



1077.18



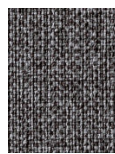
1077.19



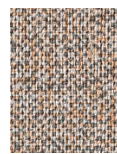
1077.20



1077.21



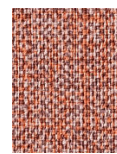
1077.22



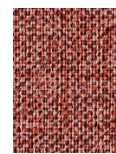
1077.23



1077.24



1077.25



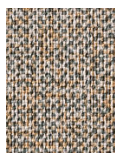
1077.26



1077.27



1077.28



1077.29