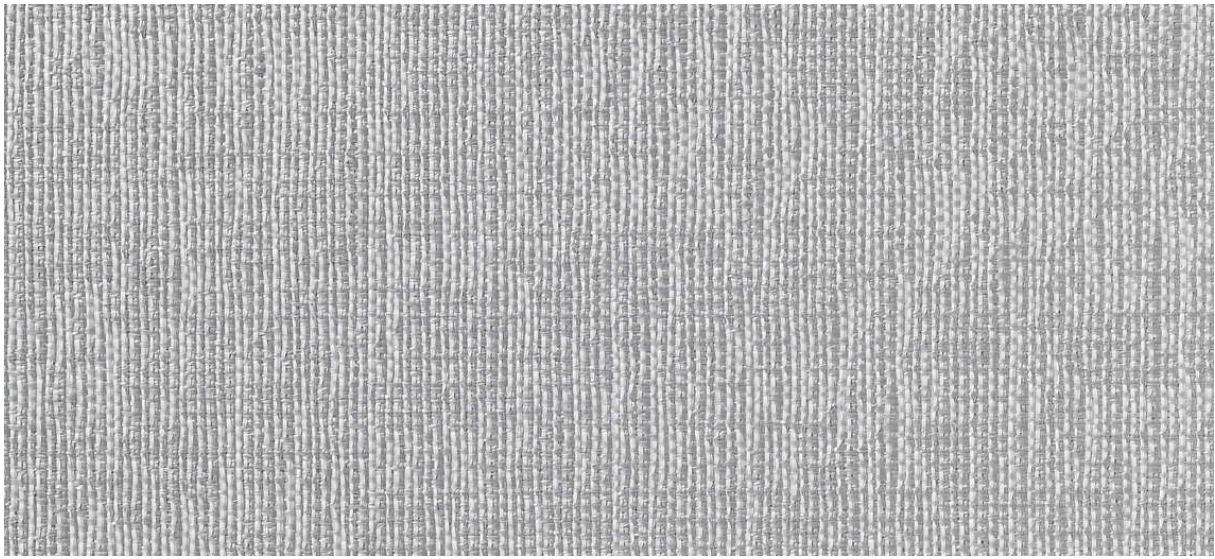


linen

2547.01 - 2547.10



collection

wallcovering

05

textile

xorel

description

all-over linen structure

composition

100% ifr xorel® (polyethylene) on x-protect wall™ (paper backing)

width

± 132 cm, ± 52 inches

weight

± 388 gr/m², ± 17 oz/yd¹

flame retardancy

EN 13501, B s1 d0

ASTM E84, A

additional information

cradle to cradle gold certified



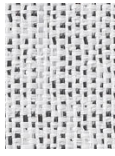
Xorel is a registered trademark and license to distribute is granted by permission of Carnegie Fabrics Inc. US

linen

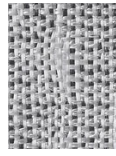
2547.01 - 2547.10



2547.01



2547.02



2547.03



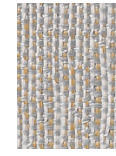
2547.04



2547.05



2547.06



2547.07



2547.09



2547.10