

kilby

1113.01 - 1113.33



collection

wallcovering

03

vinyl

description

two-tonal, non-directional linen weave structure with a matte look

composition

vinyl finishing coat on a woven cotton backing

width

± 130 cm, ± 51 inches

weight

± 350 gr/m², ± 15 oz/yd¹

sound absorption

ISO 354

alphaw 0.10

ASTM C423

nrc 0.10

flame retardancy

EN 13501, B s1 d0

IMO 2010 FTP part 2-5

ASTM E84, A

NFPA 286

colorfastness to light

ISO 105-B02

8 (scale 1-8)

CCC-W-408D

type II



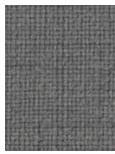
vinyl COMMITTED TO SUSTAINABLE DEVELOPMENT

CE EN 15102



kilby

1113.01 - 1113.33



1113.01



1113.02



1113.03



1113.04



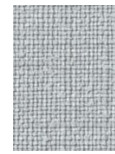
1113.05



1113.06



1113.07



1113.08



1113.09



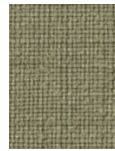
1113.10



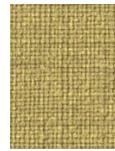
1113.11



1113.12



1113.13



1113.14



1113.15



1113.16



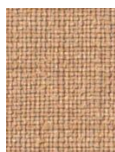
1113.17



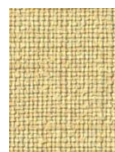
1113.18



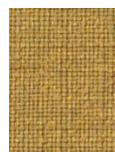
1113.19



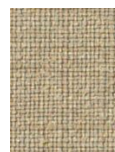
1113.20



1113.21



1113.22



1113.23



1113.24



1113.25



1113.26



1113.27



1113.28



1113.29



1113.30



1113.31



1113.32



1113.33