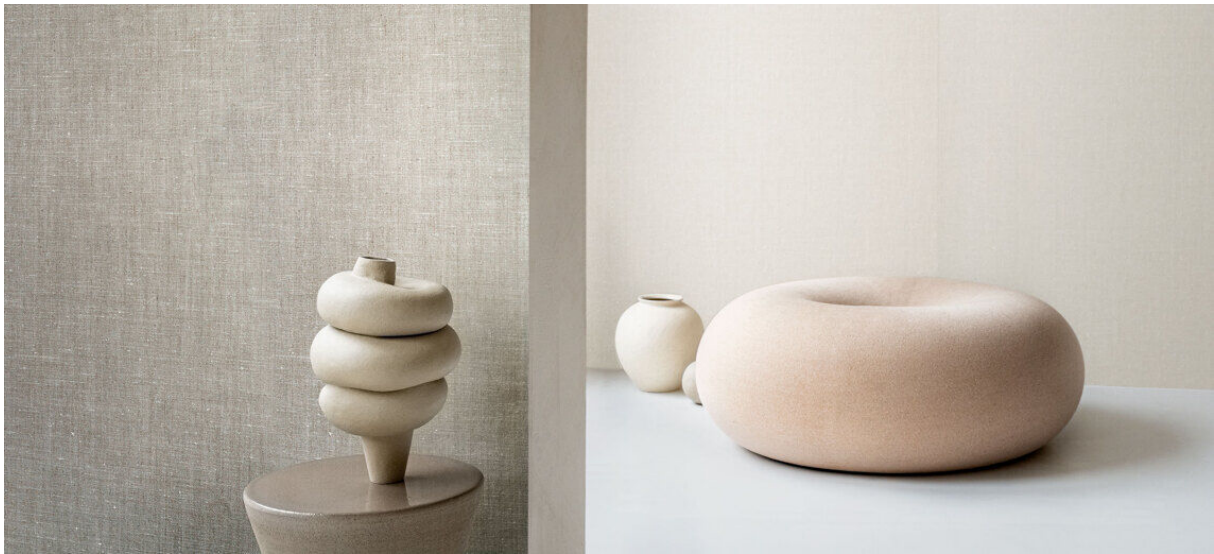


linosa

2106.01 – 2106.09



collection
**wallcovering
textile**

description
**bio-based linen wallcovering in both coarse
and fine weaves of different scales in neutral
tones**

composition
100% linen on a paper backing

width
± 137 cm, ± 54 inches

weight
± 500 gr/m², ± 22 oz/yd¹

flame retardancy
**EN 13501, B s1 d0
ASTM E84, class A**

colorfastness to light
**ISO 105-B02
7-8 (scale 1-8)
AATCC 16.3: 40 hours
5 (scale 1-5)**

water vapor permeability
**ISO 15106-3 / EN ISO 12572
Sd value <0,5 m**

CE EN 15102



linosa

2106.01 – 2106.09



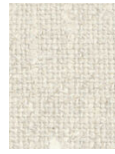
2106.01



2106.02



2106.03



2106.04



2106.05



2106.06



2106.07



2106.08



2106.09