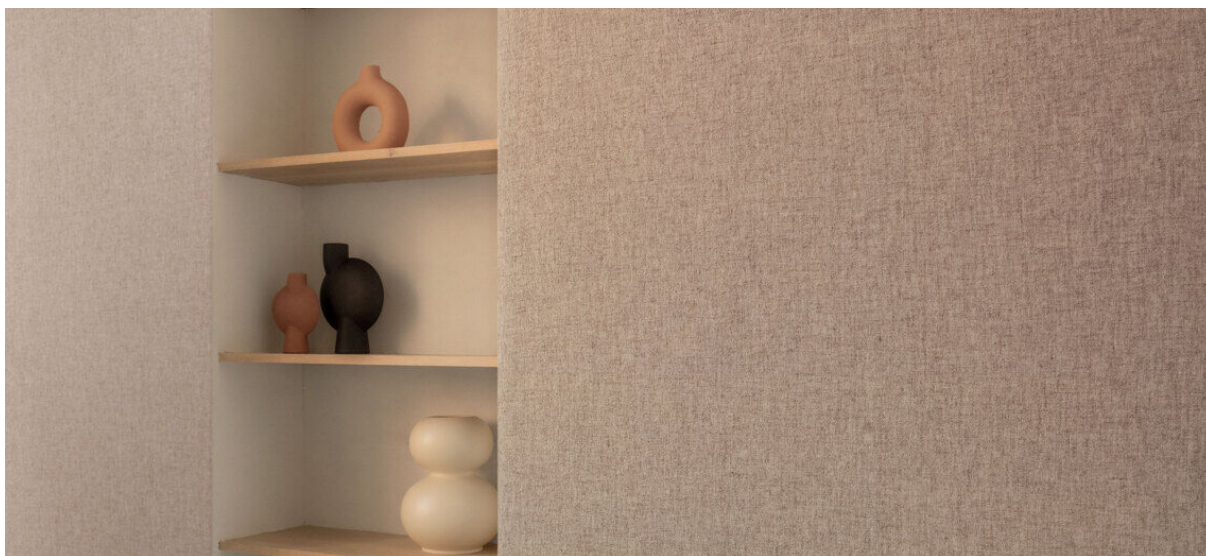


dale

2108.01 – 2108.07



collection
**wallcovering
textile**

description
**natural and sustainable wallcovering,
including 70% post-consumer recycled wool
in 7 soft mélange tones**

composition
**70% recycled wool / 25% polyester / 5%
polyamide on a non-woven backing**

width
± 134 cm, ± 53 inches

weight
± 310 gr/m², ± 14 oz/yd¹

flame retardancy
**EN 13501, C s1 d0
ASTM E84, class B**

colorfastness to light
ISO 105-B02
8 (scale 1–8)
AATCC 16.3: 40 hours
5 (scale 1–5)

water vapor permeability
ISO 15106-3 / EN ISO 12572
Sd value <0,5 m

CE EN 15102



dale

2108.01 – 2108.07



2108.01



2108.02



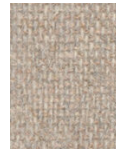
2108.03



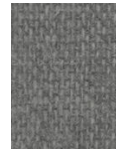
2108.04



2108.05



2108.06



2108.07