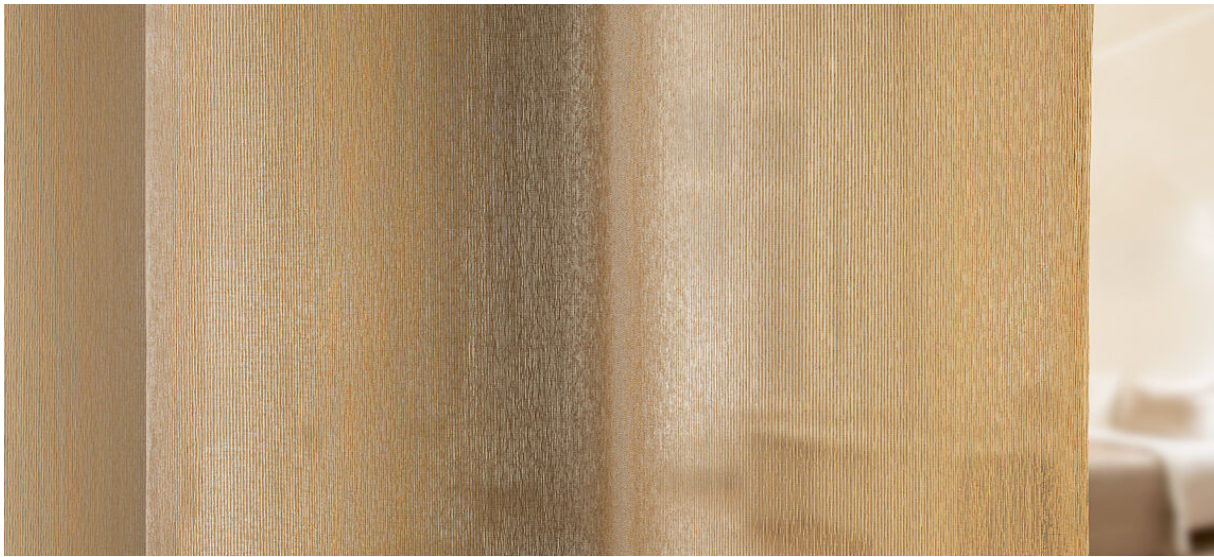


long

8037.01 - 8037.12



binder

curtain

03

sheer/transparent

descripción

transparente con estructura fina en tono metálico

composición

100% poliéster ignífugo

ancho

± 312 cm, ± 123 inches

peso

± 275 gr/m¹, ± 9 oz/yd¹ fabrics

combustión retardada

BS 5867 part 2, type C

NF P 92-503-507 M1

DIN 4102, B1

IMO Res. A 471 (XII)

EN 13773, class 1

BS 5867-2, type C

NF P 92/503-507, M1

NFPA 701

DIN 4102, B1

UNI VF 8456-8457, classe 1

IMO 2010 FTP part 7

CAN ULC S109

resistencia al frotamiento

AATCC 8

mojado 5 / seco 5 (escala 1-5)

insensibilidad a la luz

ISO 105-B02

light 6 / dark 6-7 (scale 1-8)

AATCC 16.3: 60 hours

4-5 (escala 1-5)

mantenimiento





long

8037.01 - 8037.12



8037.04



8037.03



8037.02



8037.01



8037.07



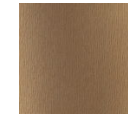
8037.08



8037.09



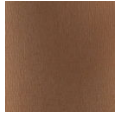
8037.06



8037.11



8037.05



8037.12



8037.10