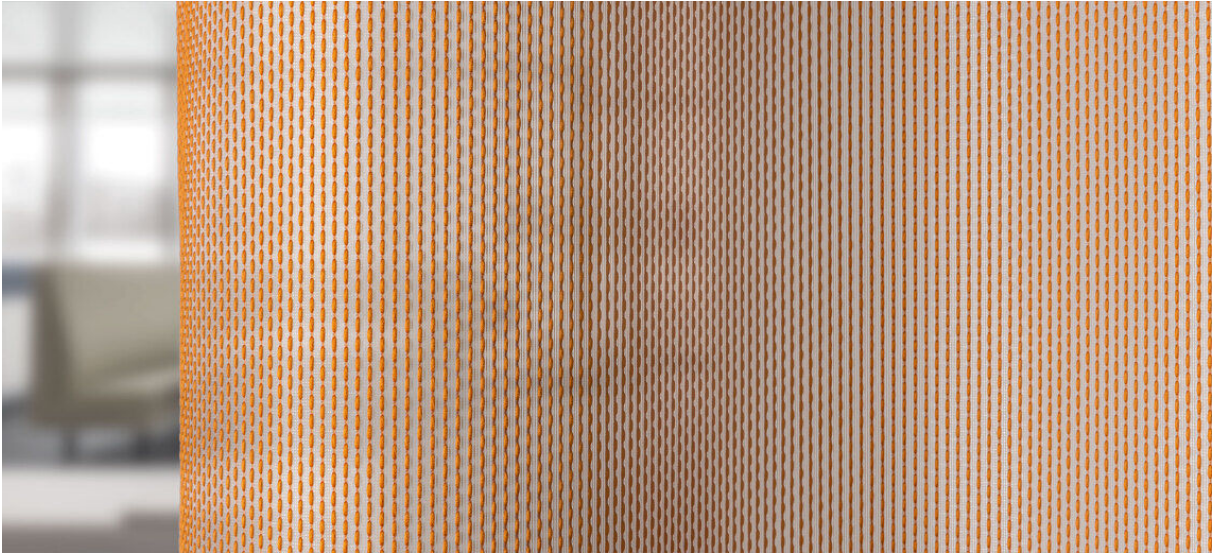


formoza

8026.01 - 8026.12



binder
curtain
sheer/transparent

descripción
tela con un hilo más grueso entretejido para
aportar estructura y volumen

composición
42% recycled polyester FR / 58% polyester
FR

ancho
± 295 cm, ± 116 inches

peso
± 392 gr/m¹, ± 13 oz/yd¹ fabrics

absorción del ruido
ISO 354
alphaw 0.80 (pleated)

ASTM C423
nrc 0.75

confort visual & térmico
EN 410/EN 14501

combustión retardada
EN 13773, class 1
BS 5867 - 2, type C
NF P 92 / 503 - 507, M1
DIN 4102, B1
UNI VF 8456 - 8457, classe 1
NFPA 701
IMO 2010 FTP part 7
CAN ULC S109

resistencia al frotamiento
ISO 105 X12
mojado 4-5 / seco 4-5 (escala 1-5)
AATCC 8
mojado 5 / seco 5 (escala 1-5)

insensibilidad a la luz
ISO 105 B02
5 (escala 1-8)
AATCC 16.3: 60 hours
5 (escala 1-5)

resistencia al deslizamiento de costuras
ISO 13936 - 2
lizo 2.5 mm / trama 2 mm

mantenimiento

carencia: lizo -0.2% / trama -0.1%


carencia: lizo -0.7% / trama -0.9%



STANDARD
100
S07-0023
Hohenstein HTTI



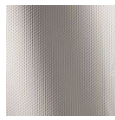
Text below the logo, likely identifying the institution or certification body.

formoza

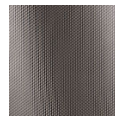
8026.01 - 8026.12



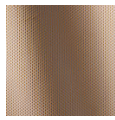
8026.01



8026.02



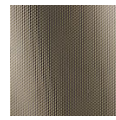
8026.03



8026.04



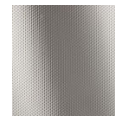
8026.05



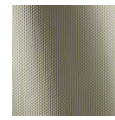
8026.06



8026.07



8026.08



8026.09



8026.10



8026.11



8026.12