

# dolin

8048.01 - 8048.09



binder

**curtain 01**

descripción

**mezcla levemente estructurada**

composición

**100% poliéster ignífugo**

ancho

**± 140 cm, ± 55 inches**

peso

**± 407 gr/m<sup>1</sup>, ± 13 oz/yd<sup>1</sup> fabrics**

confort visual & térmico

**EN 410/EN 14501**

combustión retardada

**EN 13773, class 1**

**BS 5867-2, type C**

**NF P 92/503-507, M1**

**DIN 4102, B1**

**UNI VF 8456-8457, classe 1**

**IMO 2010 FTP part 7**

**NFPA 701**

**CAN ULC S109**

resistencia al frotamiento

**ISO 105-X12**

mojado 4-5 / seco 4-5 (escala 1-5)

**AATCC 8**

mojado 5 / seco 5 (escala 1-5)

insensibilidad a la luz

**ISO 105-B02**

6 (escala 1-8)

**AATCC 16.3: 60 hrs**

5 (escala 1-5)

resistencia al deslizamiento de costuras

**ISO 13936-2**

lizo 5.5 mm / trama 4.7 mm

**ASTM D434**

lizo 32 lbs / trama 30 lbs

mantenimiento



**carencia: lizo -2% / trama -1%**



**carencia: lizo -2.8% / trama -2%**



# dolin

8048.01 - 8048.09

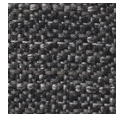
---



8048.01



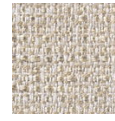
8048.02



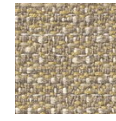
8048.03



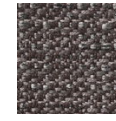
8048.04



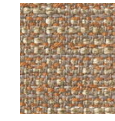
8048.05



8048.06



8048.07



8048.08



8048.09