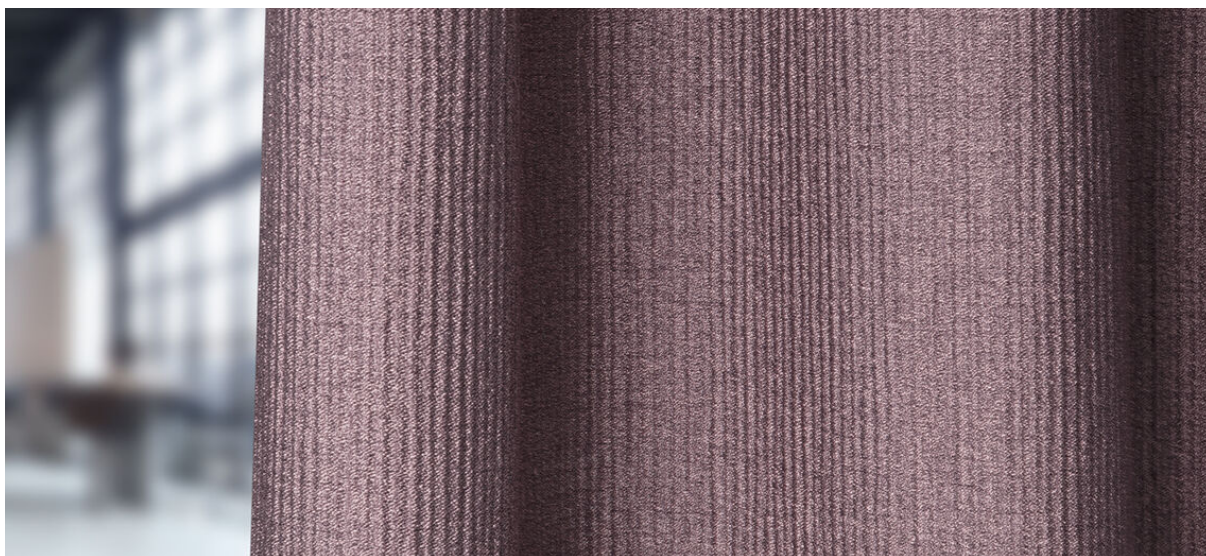


coron

8049.01 - 8049.20



binder

curtain 01

descripción

estructura longitudinal entretejida

composición

100% poliéster ignífugo

ancho

± 157 cm, ± 62 inches

peso

± 297 gr/m¹, ± 10 oz/yd¹ fabrics

confort visual & térmico

EN 410/EN 14501

combustión retardada

EN 13773, class 1

BS 5867-2, type C

NF P 92/503-507, M1

DIN 4102, B1

UNI VF 8456-8457, classe 1

IMO 2010 FTP part 7

NFPA 701:2010-1

CAN ULC S109

resistencia al frotamiento

ISO 105-X12

mojado 4-5 / seco 4-5 (escala 1-5)

AATCC 8

mojado 5 / seco 5 (escala 1-5)

insensibilidad a la luz

ISO 105-B02

6 (escala 1-8)

AATCC 16.3: 60 hrs

5 (escala 1-5)

resistencia al deslizamiento de costuras

ISO 13936-2

lizo 4 mm / trama 3.7 mm

ASTM D434

lizo 29 lbs / trama 28 lbs

mantenimiento



carencia: lizo -0.7% / trama -0.5%



carencia: lizo -1.8% / trama -1.6%

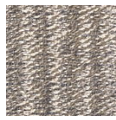


coron

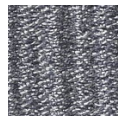
8049.01 - 8049.20



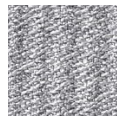
8049.01



8049.02



8049.03



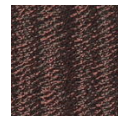
8049.04



8049.05



8049.06



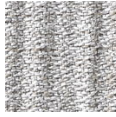
8049.07



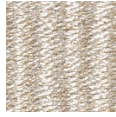
8049.08



8049.09



8049.10



8049.11



8049.12



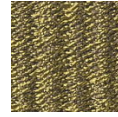
8049.13



8049.14



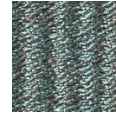
8049.15



8049.16



8049.17



8049.18



8049.19



8049.20