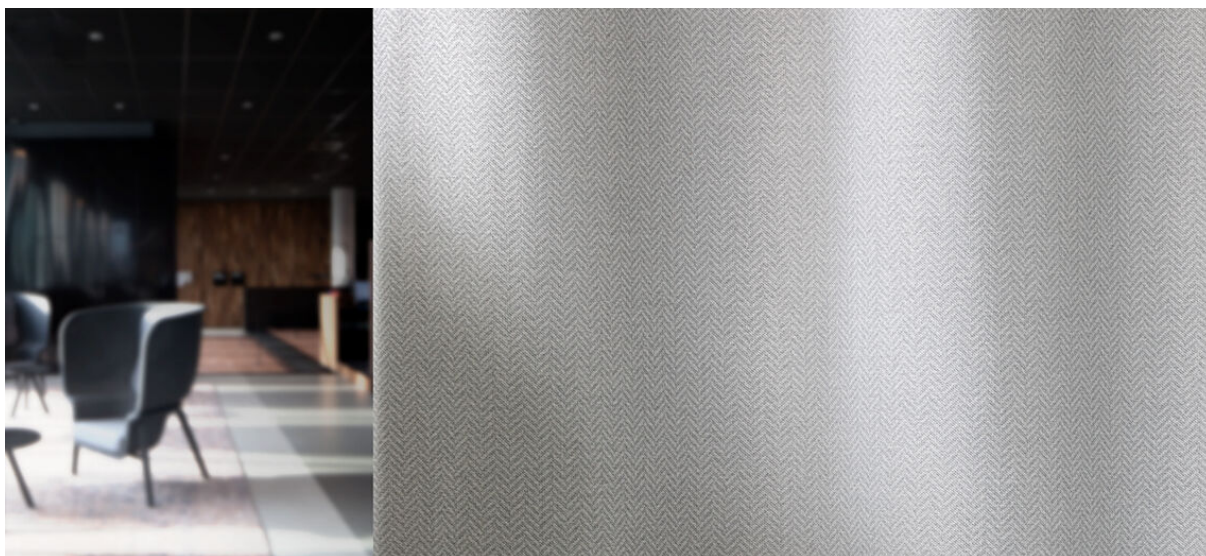


koro

8068.01 - 8068.12



binder

curtain 02

descripción

diseño de espiga estructurado, tela para cortinas, con efecto de atenuación

composición

100% poliéster ignífugo

ancho

± 294 cm, ± 116 inches

peso

± 861 gr/m¹, ± 28 oz/yd¹ fabrics

confort visual & térmico

EN 410/EN 14501

AATCC 148

combustión retardada

EN 13773, class 1

BS 5867 - 2, type C

NF P 92 / 503 - 507, M1

DIN 4102, B1

UNI VF 8456 - 8457, classe 1

NFPA 701

CAN / ULC S109

IMO 2010 FTP part 7

resistencia al frotamiento

ISO 105-X12

mojado 4-5 / seco 4-5 (escala 1-5)

AATCC 8

mojado 5 / seco 5 (escala 1-5)

insensibilidad a la luz

ISO 105-B02

5 (scale 1-8)

AATCC 16.3: 60 hours

2.5 (escala 1-5)

resistencia al deslizamiento de costuras

ASTM D434

53.5 lbs warp / 48 lbs weft

mantenimiento



carencia: lizo -0.8% / trama -0.4%



carencia: chaîne -1.6% / trame -0.7%

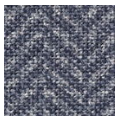


**CONFIDENCE
IN TEXTILES**
Tested for harmful substances
according to Oeko-Tex® Standard 100

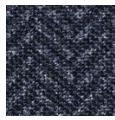


koro

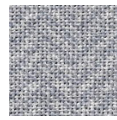
8068.01 - 8068.12



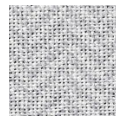
8068.01



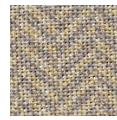
8068.02



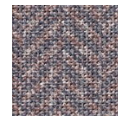
8068.03



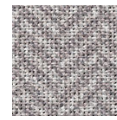
8068.04



8068.05



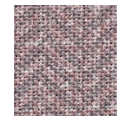
8068.06



8068.07



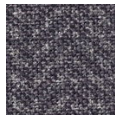
8068.08



8068.09



8068.10



8068.11



8068.12