

elba

8069.01 - 8069.20



binder

curtain 02

descripción

tela para cortinas con aspecto de mezcla estructurada, con efecto de oscurecimiento

composición

100% flame retardant polyester acrylic coating

ancho

± 277 cm, ± 109 inches

peso

± 1075 gr/m¹, ± 35 oz/yd¹ fabrics

confort térmico & visual

EN 14501

class 4 (escala 1-4)

AATCC 148

100% light blocked

combustión retardada

EN 13773, class 1

BS 5867-2, type B

DIN 4102, B1

UNI VF 8456-8457, classe 1

NFPA 701

CAN/ULC S109

IMO 2010 FTP part 7

resistencia al frotamiento

ISO 105-X12

mojado 4-5 / seco 4-5 (escala 1-5)

AATCC 8

nat 5 / droog 5 (escala 1-5)

insensibilidad a la luz

ISO 105-B02

5 (escala 1-8)

AATCC 16.3: 60 hours

2.5 (escala 1-5)

resistencia al deslizamiento de costuras

ASTM D434

warp 44 lbs / weft 49.5 lbs

mantenimiento



carencia: lizo -0.9% / trama -0.6%



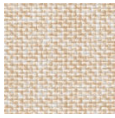
carencia: lizo -1.5% / trama -1.2%



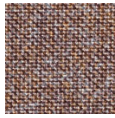
Hochschule Niederrhein
University of Applied Sciences

elba

8069.01 - 8069.20



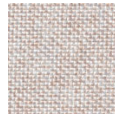
8069.01



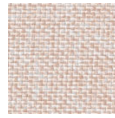
8069.02



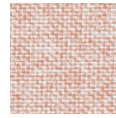
8069.03



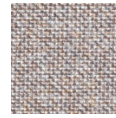
8069.04



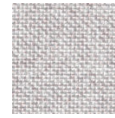
8069.05



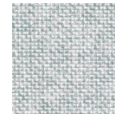
8069.06



8069.07



8069.08



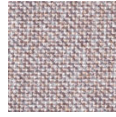
8069.09



8069.10



8069.11



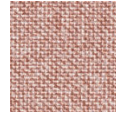
8069.12



8069.13



8069.14



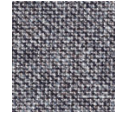
8069.15



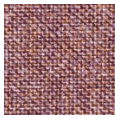
8069.16



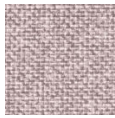
8069.17



8069.18



8069.19



8069.20