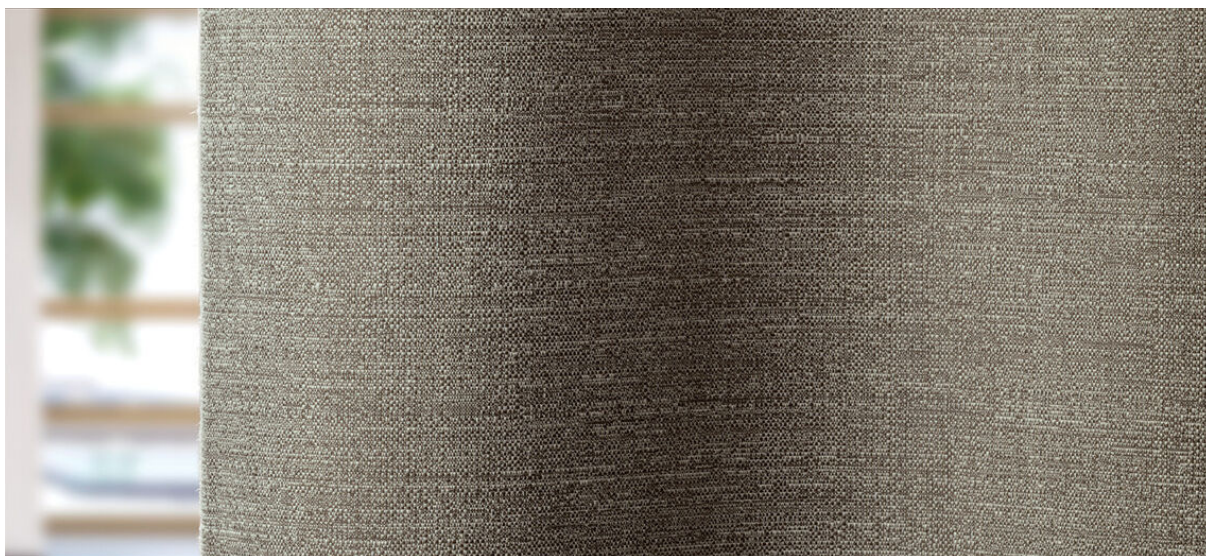


rona

8080.01 - 8080.09



binder

curtain 01

descripción

tejido mate con textura irregular con una apariencia de lino natural

composición

100% poliéster ignífero

ancho

± 301 cm, ± 118 inches

peso

± 762 gr/m¹, ± 25 oz/yd¹ fabrics

confort visual & térmico

EN 410/EN 14501

combustión retardada

EN 13773, class 1

BS 5867-2, type C

NF P 92/503-507, M1

DIN 4102, B1

UNI VF 8456-8457, classe 1

IMO 2010 FTP part 7

NFPA 701

CAN/ULC S109

resistencia al frotamiento

ISO 105-X12

mojado 4-5 / seco 4-5 (escala 1-5)

AATCC 8

mojado 5 / seco 5 (escala 1-5)

insensibilidad a la luz

ISO 105-B02

6 (escala 1-8)

AATCC 16.3: 60 hours

4.5 (escala 1-5)

resistencia al deslizamiento de costuras

ISO 13936-2

warp 3.7 mm / weft 4 mm

ASTM D434

warp 49 lbs / weft 55 lbs

mantenimiento



carencia: lizo: -2.1% / trama: -1.8%



**CONFIDENCE
IN TEXTILES**
Tested for harmful substances
according to Oeko-Tex® Standard 100

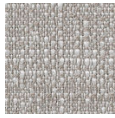


rona

8080.01 - 8080.09



8080.01



8080.02



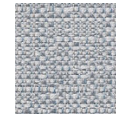
8080.03



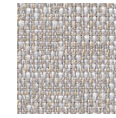
8080.04



8080.05



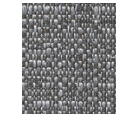
8080.06



8080.07



8080.08



8080.09