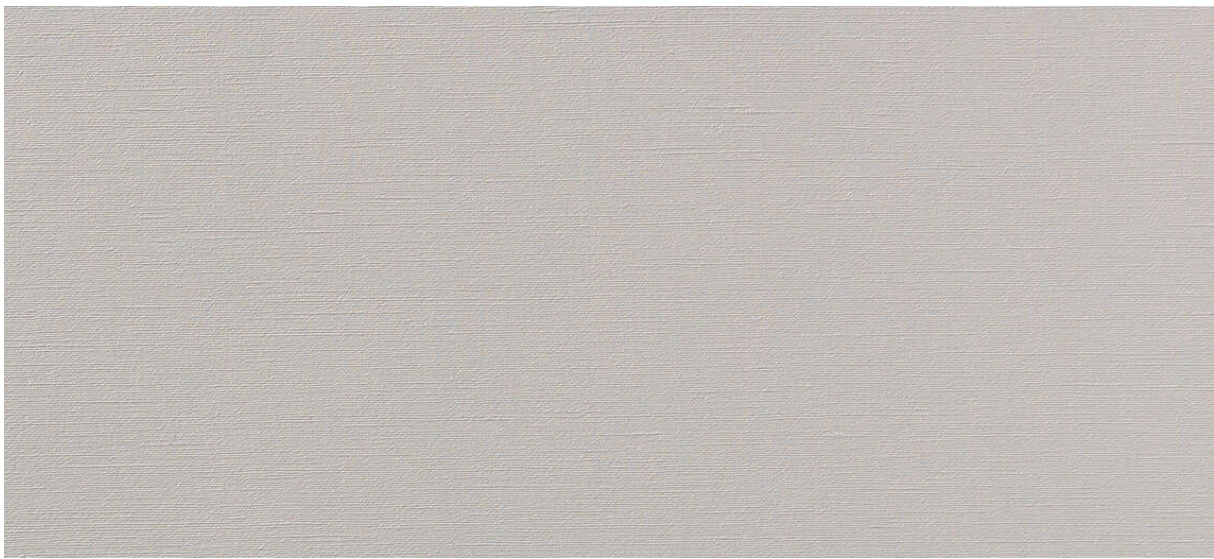


dalma

7024.01 - 7024.22



binder

**upholstery
vinyl**

descripción

estructura de tejido de seda

composición

**espuma de vinilo, soporte de
algodón/poliéster**

ancho

± 137-140 cm, ± 54-55 inches

peso

**backing: ± 110 gr/m², ± 5 oz/yd¹
coating: ± 690 gr/m², ± 31 oz/yd¹**

espesor

1.1 mm, 0.04 inches

combustión retardada

EN 1021/1-2

BS 5852, crib 5

NF P 92/503 - 507, M2

NF D60-013 (AM 18)

DIN 4102, B2

UNI 9175, classe 1 IM

Cal TB 117

NFPA 260, class 1

IMO 2010 FTP part 8

resistencia al desgaste

ISO 12947-2

> 300.000 rubs martindale

ASTM D4157

100.000 double rubs wyzenbeek

resistencia al frotamiento

ISO 105-X12

wet 5 / dry 5 (scale 1-5)

AATCC 8

wet 5 / dry 5 (scale 1-5)

insensibilidad a la luz

ISO 105-B02

7 (scale 1-8)

ASTM D4329: 150 hours

4 (scale 1-5)

resistencia a la sangre, orina, sudor y grasa de la piel

EN 12720

5 (scale 1-5)

resistencia a la tensión

ISO 1421

length 470 N / width 313 N

ASTM D2261

length 7.3 lbs / width 9.2 lbs

flexibles

ISO 7854

400.000 cycles

adhesión al revestimiento

ASTM D751

length 8.3 lbf / width 5.2 lbf



vinyl 
COMMITTED TO
SUSTAINABLE DEVELOPMENT

dalma

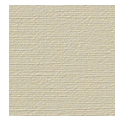
7024.01 - 7024.22



7024.01



7024.02



7024.03



7024.04



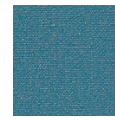
7024.05



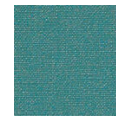
7024.06



7024.07



7024.08



7024.09



7024.10



7024.11



7024.12



7024.13



7024.14



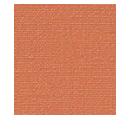
7024.15



7024.16



7024.17



7024.18



7024.19



7024.20



7024.21



7024.22