

# bowen

7030.01 - 7030.39



colección

**upholstery  
textile**

descripción

**tela para tapicería de lana mezclada**

composición

**92% lana / 8% poliamida**

ancho

**± 140 cm, ± 55 inches**

peso

**± 530 gr/m<sup>1</sup>, ± 17 oz/yd<sup>1</sup> fabrics**

combustión retardada

**EN 1021/1-2**

**BS 5852, crib 5**

**UNI 9175, classe 1 IM**

**Cal TB 117-2013**

**NFPA 260, class 1**

**NF D 60-013 - AM18**

**IMO 2010 FTP part 8**

resistencia al desgaste

**ISO 12947-2**

100.000 rubs martindale

**ASTM D4157**

35.000 double rubs wyzenbeek

pilling

**ISO 12945-2**

4 (escala 1-5)

**ASTM D3511**

5 (escala 1-5)

resistencia al frotamiento

**ISO 105-X12**

mojado 4-5 / seco 4-5 (escala 1-5)

**AATCC 8**

mojado 5 / seco 5 (escala 1-5)

insensibilidad a la luz

**ISO 105-B02**

4 - 5 (escala 1-8)

**AATCC 16.3**

5 (escala 1-5)

resistencia al deslizamiento de costuras

**ISO 13936 - 2**

lizo 5 mm / trama 4.5 mm

**ASTM D4034**

lizo 120 lbs / trama 87 lbs

resistencia a la tensión

**ASTM D5034**

lizo 212 lbs / trama 191 lbs

mantenimiento





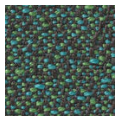
STANDARD  
100

S10-0100  
Hohenstein HTTI

# bowen

7030.01 - 7030.39

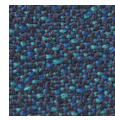
---



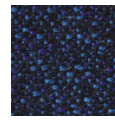
7030.14



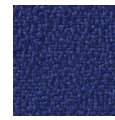
7030.13



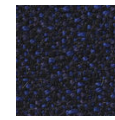
7030.10



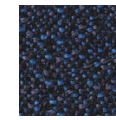
7030.06



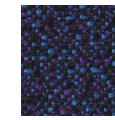
7030.05



7030.09



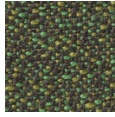
7030.12



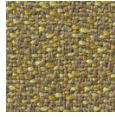
7030.01



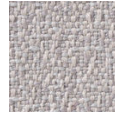
7030.02



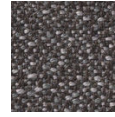
7030.15



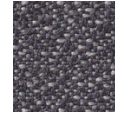
7030.16



7030.17



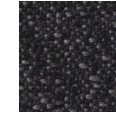
7030.04



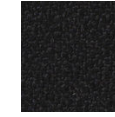
7030.03



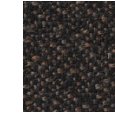
7030.08



7030.11



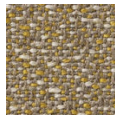
7030.07



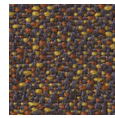
7030.21



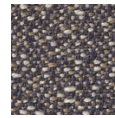
7030.35



7030.32



7030.34



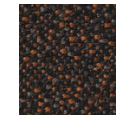
7030.20



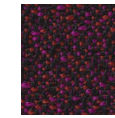
7030.24



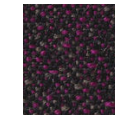
7030.36



7030.31



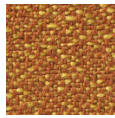
7030.30



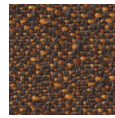
7030.27



7030.33



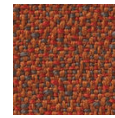
7030.19



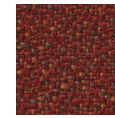
7030.29



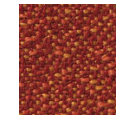
7030.23



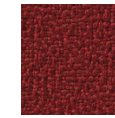
7030.26



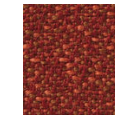
7030.28



7030.18



7030.25



7030.22



7030.37



7030.39



7030.38