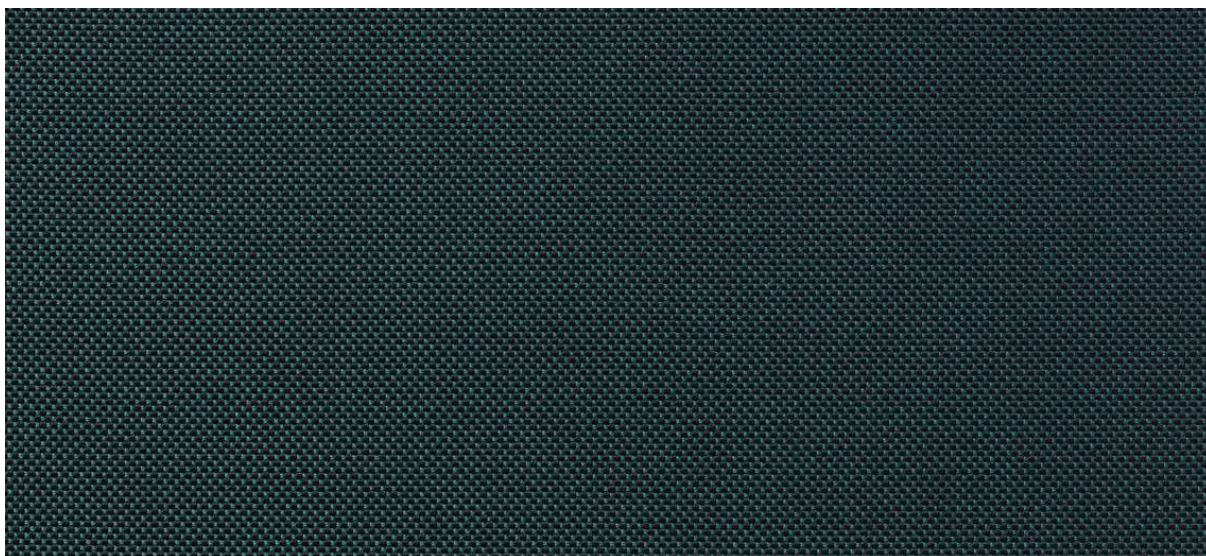


cres

7010.01 - 7010.40



binder

upholstery 02

descripción

fina microestructura con efecto cambiante en colores alegres muy combinables

composición

100% poliéster ignífugo

ancho

± 140 cm, ± 55 inches

peso

± 441 gr/m¹, ± 14 oz/yd¹ fabrics

combustión retardada

EN 1021/1-2

BS 5852, crib 5

NF P 92/503-507, M1

DIN 4102, B1

IMO 2010 FTP part 8

UNI 9175, classe 1 IM

Cal TB 117

NFPA 260, class 1

resistencia al desgaste

ISO 12947-2

90.000 rubs martindale

ASTM D4157

60.000 double rubs wyzenbeek

pilling

ISO 12945-2

4 (escala 1-5)

ASTM D3511

5 (escala 1-5)

resistencia al frotamiento

ISO 105-X12

mojado 4-5 / seco 4-5 (escala 1-5)

AATCC 8

mojado 5 / seco 5 (escala 1-5)

insensibilidad a la luz

ISO 105-B02

claro 6 / oscuro 6-7 (escala 1-8)

AATCC 16.3: 40 hours

5 (escala 1-5)

resistencia al deslizamiento de costuras

ISO 13936 - 2

lizo 2.7 mm / trama 3 mm

ASTM D4034

lizo 75 lbs / trama 58 lbs

resistencia a la tensión

ASTM D5034

lizo 200 lbs / trama 271 lbs

mantenimiento



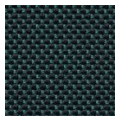
carencia: lizo -1% / trama -0.7%



carencia: lizo -2.9% / trama -1.6%



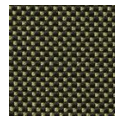
cres7010.01 - 7010.40



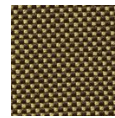
7010.01



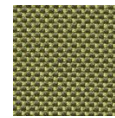
7010.03



7010.07



7010.08



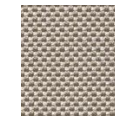
7010.04



7010.05



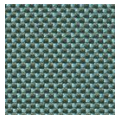
7010.22



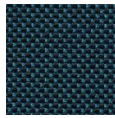
7010.36



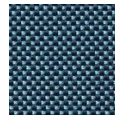
7010.33



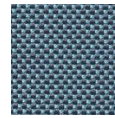
7010.02



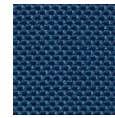
7010.11



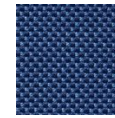
7010.10



7010.06



7010.09



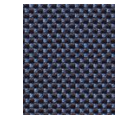
7010.13



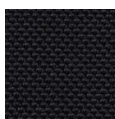
7010.17



7010.14



7010.18



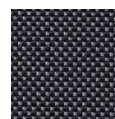
7010.20



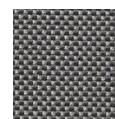
7010.19



7010.12



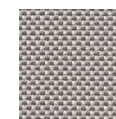
7010.15



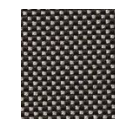
7010.21



7010.32



7010.16



7010.25



7010.37



7010.40



7010.39



7010.31



7010.28



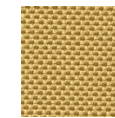
7010.30



7010.29



7010.27



7010.23



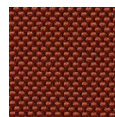
7010.26



7010.38



7010.34



7010.35



7010.24