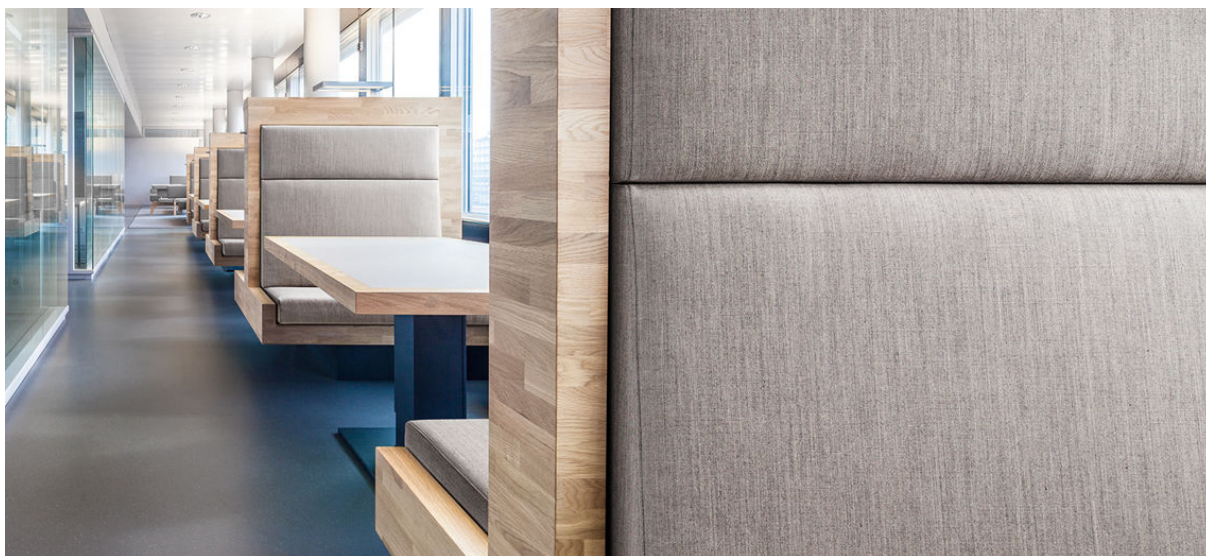


balta

7040.01 - 7040.19



binder

upholstery 01

descripción

mezcla de lana fina semilisa

composición

80% lana / 20% poliamida

ancho

± 140 cm, ± 55 inches

peso

± 427 gr/m¹, ± 14 oz/yd¹ fabrics

combustión retardada

EN 1021/1-2

BS 5852, crib 5

UNI 9175, classe 1

Cal TB 117-2013

NFPA 260, classe 1

IMO 2010 FTP part 8

resistencia al desgaste

ISO 12947-2

100.000 rubs martindale

ASTM D4157

100.000 double rubs wyzenbeek

pilling

ISO 12945-2

4 (escala 1-5)

ASTM D3511

4 (escala 1-5)

resistencia al frotamiento

ISO 105-X12

mojado 4-5 / seco 4-5 (escala 1-5)

AATCC 8

mojado 4-5 / seco 4-5 (escala 1-5)

insensibilidad a la luz

ISO 105-B02

4-5 (escala 1-8)

AATCC 16.3: 40 hours

4-5 (escala 1-5)

resistencia al deslizamiento de costuras

ISO 13936 - 2

lizo 3.5 mm / trama 4 mm

ASTM D4034

lizo 85.5 mm / trama 95.5 mm

resistencia a la tensión

ASTM D5034

warp 192.3 lbs / weft 163.7 lbs

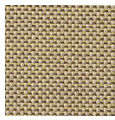
mantenimiento





balta

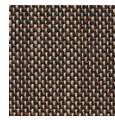
7040.01 - 7040.19



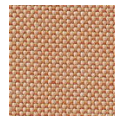
7040.01



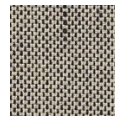
7040.06



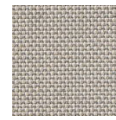
7040.09



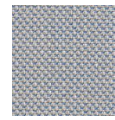
7040.04



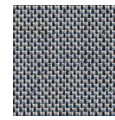
7040.03



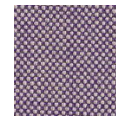
7040.14



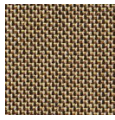
7040.16



7040.17



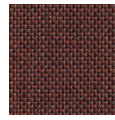
7040.18



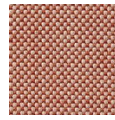
7040.02



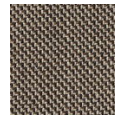
7040.08



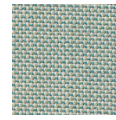
7040.10



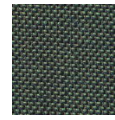
7040.07



7040.05



7040.11



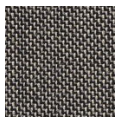
7040.12



7040.19



7040.15



7040.13