

# fuga

7047.01 - 7047.26



colección

**upholstery  
textile**

descripción

**chenilla tejida en dos tonos, de colores  
actuales**

composición

**79% recycled polyester FR / 21% polyester  
FR**

ancho

**± 135 cm, ± 53 inches**

peso

**± 807 gr/m<sup>1</sup>, ± 26 oz/yd<sup>1</sup> fabrics**

combustión retardada

**EN 1021/ 1- 2**

**BS 5852, crib 5**

**NF P 92 / 503 - 507, M1**

**DIN 4102, B1**

**IMO 2010 FTP part 8**

**UNI 9175, classe 1 IM**

**Cal TB 117**

**NFPA 260, class 1**

resistencia al desgaste

**ISO 12947-2**

75.000 rubs martindale

**ASTM D4157**

40.000 double rubs wyzenbeek

pilling

**ISO 12945-2**

4-5 (escala 1-5)

**ASTM D3511**

5 (escala 1-5)

resistencia al frotamiento

**ISO 105-X12**

mojado 4-5 / seco 4-5 (escala 1-5)

**AATCC 8**

mojado 5 / seco 5 (escala 1-5)

insensibilidad a la luz

**ISO 105-B02**

6-7 (escala 1-8)

**AATCC 16.3: 40 hours**

5 (escala 1-5)

resistencia al deslizamiento de costuras

**ISO 13936-2**

lizo 4.7 mm / trama 3 mm

**ASTM D4034**

lizo 41 lbf / trama 100 lbf

resistencia a la tensión

**ASTM D5034**

warp 167 lbs / weft 378 lbs

mantenimiento



**carencia: lizo -1.6% / trama -1.6%**



**carencia: lizo -1.0% / trama -3.1%**



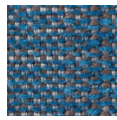
STANDARD  
100

S07-0023  
Hohenstein HTTI

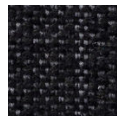
# fuga

7047.01 - 7047.26

---



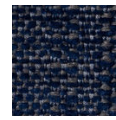
7047.01



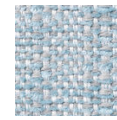
7047.02



7047.03



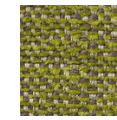
7047.04



7047.05



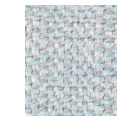
7047.06



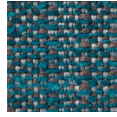
7047.07



7047.08



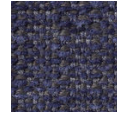
7047.09



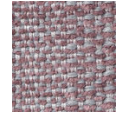
7047.10



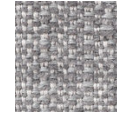
7047.11



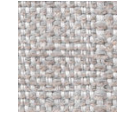
7047.12



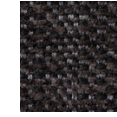
7047.13



7047.14



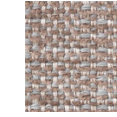
7047.15



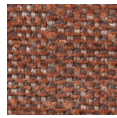
7047.16



7047.17



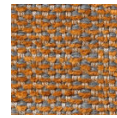
7047.18



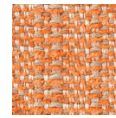
7047.19



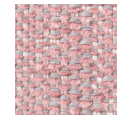
7047.20



7047.21



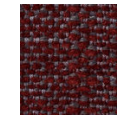
7047.22



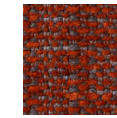
7047.23



7047.24



7047.25



7047.26