

# burton

7056.01 - 7056.23



binder

**upholstery 01**

descripción

**tela tejida monomaterial en dos colores con efecto de mezcla**

composición

**100% poliéster ignífugo**

ancho

**± 140 cm, ± 55 inches**

peso

**± 763 gr/m<sup>1</sup>, ± 25 oz/yd<sup>1</sup> fabrics**

combustión retardada

**EN 1021/ 1-2**

**BS 5852, crib 5**

**NF P 92 / 503 - 507, M1**

**DIN 4102, B1**

**UNI 9175, classe 1 IM**

**Cal TB 117**

**NFPA 260, class 1**

**IMO 2010 FTP part 8**

resistencia al desgaste

**ISO 12947-2**

80.000 rubs martindale

**ASTM D4157**

100.000 double rubs wyzenbeek

pilling

**ISO 12945-2**

4 (escala 1-5)

**ASTM D3511**

4 (escala 1-5)

resistencia al frotamiento

**ISO 105-X12**

mojado 4 - 5 / seco 4 - 5 (escala 1-5)

**AATCC 8**

mojado 5 / seco 5 (escala 1-5)

insensibilidad a la luz

**ISO 105-B02**

6 - 7 (escala 1-8)

**AATCC 16.3: 40 hours**

4.5 (escala 1-5)

resistencia al deslizamiento de costuras

**ISO 13936 - 2**

lizo 3 mm / trama 2.7 mm

**ASTM D4034**

lizo 101 lbs / trama 107 lbs

resistencia a la tensión

**ASTM D5034**

warp 365 lbs / weft 289 lbs

mantenimiento



**carencia: lizo -0.7% / trama -0.6%**



**carencia: lizo -1.8% / trama -2.2%**



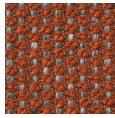
# burton

7056.01 - 7056.23

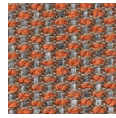
---



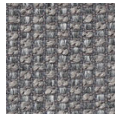
7056.01



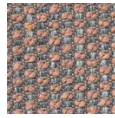
7056.02



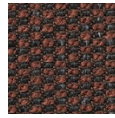
7056.03



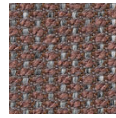
7056.04



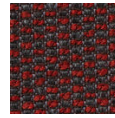
7056.05



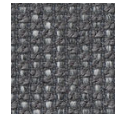
7056.06



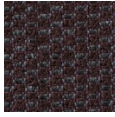
7056.07



7056.08



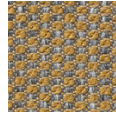
7056.09



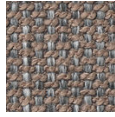
7056.10



7056.11



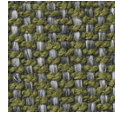
7056.12



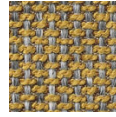
7056.13



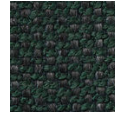
7056.14



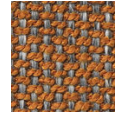
7056.15



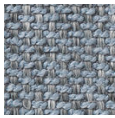
7056.16



7056.17



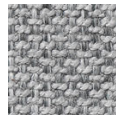
7056.18



7056.19



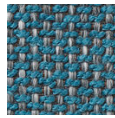
7056.20



7056.21



7056.22



7056.23